



Informed by
organizations
serving Regent
Park and
advocating for
social cohesion
and inclusion.

REGENT PARK SPACE NEEDS

MARCH 16th 2022 - ASSESSMENT

www.regentparksocial.org


**COMMUNITY
BUILDING
WORKING GROUP**



TABLE OF CONTENTS

PAGE		TOPIC
03	Appendix of Submissions	05 Executive Summary
07	Community Engagement	09 Indoor Space Needs
10	Outdoor Space Needs	11 Space Needs - Now
12	Space Needs (3 -10) Years from Now	13 Submissions
46	AOCC Space in Regent Park	
47	The Survey	
48	Recommendations & Thank You	



● ● ●
**COMMUNITY
BUILDING
WORKING GROUP**

APPENDIX - SUBMISSIONS

PAGE

ORGANIZATION

13 ACORN ARTS PROJECT

14 BLACK TALENT INITIATIVE

15 CONNECT UMMAH

16 DOWNTOWN SOMALI YOUTH UNION

17 FOCUS MEDIA ARTS CENTRE

19 GREEN THUMBS GROWING
KIDS - FACULTY OF
GEORGE BROWN COLLEGE

20 HAWLA'S KITCHEN

21 HEALING AS ONE

22 KICK START ARTS

23 LUA SHAYENNE DANCE COMPANY

24 LIBRARY SPACE

25 NEIGHBOURHOOD LEGAL SERVICES

26 NEIGHBOURHOOD PODS TO

27 NON-RESIDENT NEPALI
ASSOCIATION - CANADA

28 PRAYER SPACE



★ **WE WANT TO HEAR FROM YOU**

**WHAT SPACE DO YOU HAVE
ACCESS TO NOW & WHAT ARE
YOUR NEEDS 10 YEARS FROM
NOW?**

spaces ★

APPENDIX - SUBMISSIONS

PAGE

ORGANIZATION

29	REGENT PARK NEIGHBOURHOOD ASSOCIATION	30	REGENT PARK FILM FESTIVAL
32	REGENT PARK FOOD PARTNERSHIP	33	REGENT PARK ISLAMIC RESOURCE CENTRE
34	REGENT PARK SOCIAL ACTION GROUP (RPSAG)	35	REGENT PARK SOMALI COMMUNITY ORGANIZATION INC.
36	REGENT PARK TENANTS RIGHTS ASSOCIATION	37	STREET HEALTH
38	THE LANSDOWNE CONE	39	TNG COMMUNITY SERVICES
40	TORONTO COUNCIL FIRE NATIVE CULTURAL CENTRE	42	VISIONS OF SCIENCE NETWORK FOR LEARNING
44	WANASAH: MENTAL HEALTH SERVICES FOR BLACK YOUTH	45	WISE MEDIA INC.
46	AOCC (Association of Community Centres) SPACE IN REGENT PARK		

WE WANT TO HEAR FROM YOU

WHAT SPACE DO YOU HAVE ACCESS TO NOW & WHAT ARE YOUR NEEDS 10 YEARS FROM NOW?

INDOOR & OUTDOOR

SPACE NEEDS LINK:
[HTTPS://BIT.LY/REGENTSPACEFORM](https://bit.ly/regentspaceform)

Please scan the QR Code to access the Form.






EXECUTIVE SUMMARY



fb.com/regentpark_social



[@regentpark_social](https://twitter.com/regentpark_social)



[regentpark_social](https://www.instagram.com/regentpark_social)

Our Vision:
SOCIAL COHESION AND INCLUSION

WWW.REGENTPARKSOCIAL.ORG

SPACE
NEEDS

EXECUTIVE SUMMARY

ABOUT US

The Community Facilities Committee sought feedback from resident-led groups or service providers operating in the Regent Park Community regarding their organizations space needs.

The committee working closely with the resident co-chair - Walied Khogali Ali of the community building working group commissioned a survey with 10 important questions assessing the needs of organizations operating in Regent Park or serving the residents of Regent Park, Toronto.

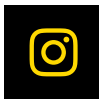
The survey was made available for a week from Wednesday, **March 9th-16th 2022**.

The committee received **30 total submissions** - 29 submissions from organizations and one submission regarding community space governance.

The space requests range from office space, recreational space, prayer space, programming and **safe** activity spaces. The report is a **resource** and a space needs **assessment**.

SOCIAL MEDIA ENGAGEMENT

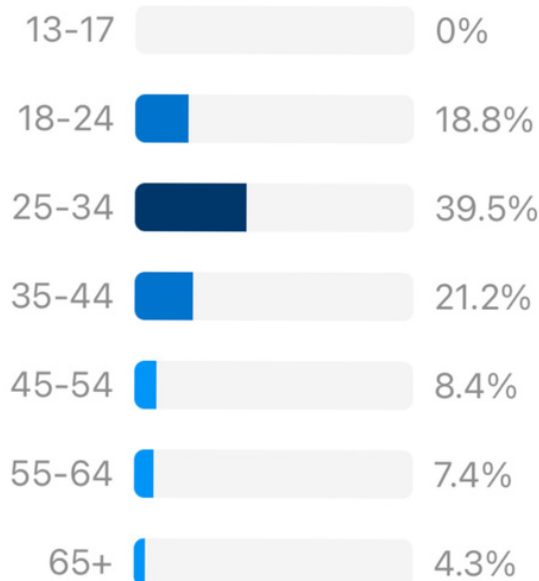
This chart is the total number of visitors through Social Media for March 9th - 16th 2022. The visitors are mainly from the Canada, 50% from Ontario.



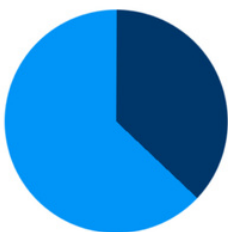
2605
people
reached

4802
impressions

Age Range



Gender



61.4%
Women

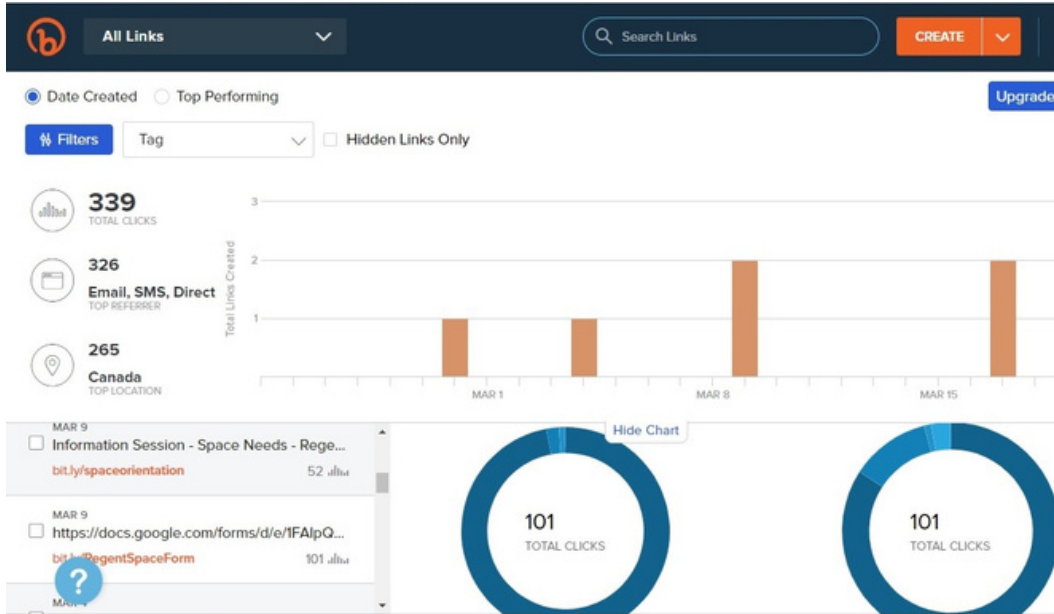
37.0%
Men



SPACE NEEDS

COMMUNITY ENGAGEMENT

COMMUNITY ENGAGEMENT



This chart is the total number of visitors who clicked on the survey link. In summary, 98 via direct links, 2 via google and 1 via WeChat. The visitors are mainly from the Canada - 85 from Canada, 12 from the United States, 1 from Ireland and 3 from other countries.

MEDIA REACH

WE WANT TO HEAR FROM YOU

WHAT SPACE DO YOU HAVE ACCESS TO NOW & WHAT ARE YOUR NEEDS 10 YEARS FROM NOW?

INDOOR & OUTDOOR

SPACE NEEDS LINK:
[HTTPS://BIT.LY/REGENTSPACEFORM](https://bit.ly/regentspaceform)

Please scan the QR Code to access the Form.



PLEASE SUBMIT YOUR SPACE NEEDS BY WEDNESDAY, MARCH 16TH AT 12 PM.

+416-625-7712

EMAIL: WALIED.K@GMAIL.COM





REGENT PARK FOCUS - REGENT PARK TV WEEKLY NEWS (EPISODE 23). MEET THE RPNA LEADERSHIP TEAM! - MARCH 14TH 2022

**SPACE
NEEDS**

COMMUNITY ENGAGEMENT

COMMUNITY NEWSLETTERS

RP Newsletter: URGENT - REGENT PARK - **SPACE NEEDS** - Community Services and Facilities Report - DEADLINE - Wednesday, March 16th 2022 [Inbox x](#)

RP News [Unsubscribe](#)
to me ▾

Sun, Mar 13, 8:59 PM (11 days ago)



A NOTICE WAS SENT VIA THE REGENT PARK COMMUNITY NEWSLETTER ON MARCH 13TH 2022.

Share your space needs in Regent Park! [Inbox x](#)

TCHC Revitalization team talkregentpark@torontohousing.ca via gmail.mcsv.net
to me ▾

Mon, Mar 14, 6:29 PM (10 days ago) ☆



A NOTICE WAS SENT VIA the TCHC NEWSLETTER on March 14th 2022.



COMMUNITY ENGAGEMENT

INFORMATION SESSION(S)

Three Information Sessions were held on the following days for the following purpose:
To Engage with Organizations and update survey submissions.

- Information Session 1: Friday, March 11th 2022 from 11 am - 12 pm.
- Information Session 2: Tuesday, March 15th from 4 - 6 pm
- Session 3 - Review of Regent Park Space Needs - Friday, March 18th 2022 from 11 am - 12 pm - an opportunity for corrections to the information submitted.

ORGANIZATION

INDOOR NEEDS - IN SQ FEET

1.	Acorn Arts Project	2,500
2.	Black Talent Initiative	750
3.	Connect Ummah	5,850
4.	Downtown Somali Youth Union	1,600
5.	Focus Media Arts Centre	3500
6.	Green Thumbs Growing Kids, Faculty of George Brown College.	300
		900
7.	Hawla's Kitchen	16,210
8.	Healing as One -	0
9.	Kick Start Arts	1,650
10.	Lua Shayenne Dance Company	10,000
11.	Library Space	3,689
12.	Neighbourhood Legal Services	10,800
13.	Neighbourhood Pods Toronto -	2000
14.	NRNA CANADA	12,000
15.	Prayer Space	2,800
16.	Regent Park Neighbourhood Association - RPNA	9,064
17.	Regent Park Film Festival	0
18.	Regent Park Food Partnership.	8,000
19.	Regent Park Islamic Resource Centre	2,000
20.	Regent Park Social Action Group	1,400
21.	Regent Park Somali Com. Organization Inc.	850
22.	Regent Park Tenants Right Association	1,500
23.	Street Health	1,000
24.	The Lansdowne Cone	3,000
25.	TNG Community Services	1,200
26.	Toronto Council Fire Native Cultural Centre	3,500
27.	Visions of Science Network for Learning	1,300
28.	Wanasah	450
29.	Wise Media Inc.	




**SPACE
NEEDS**

INDOOR SPACE NEEDS

TOTAL INDOOR SPACE REQUESTS

The Total request submitted by 29 organizations is
107,813 square feet.



OUTDOOR SPACE NEEDS



OUTDOOR NEEDS- IN SQ FEET

ORGANIZATION

1.	Acorn Arts Project	200
2.	Regent Park Film Festival	22,425
3.	Regent Park Food Partnership.	15,000

TOTAL OUTDOOR SPACE REQUESTS

The Total request submitted by 3 organizations is
37,625 square feet.



SPACE NEEDS NOW

SURVEY RESULTS

The survey results captured the current and future needs of the organizations serving Regent Park. Below are the results of the organizations that wants spaces now.

ORGANIZATION

SPACE NEEDS NOW

1.	Acorn Arts Project	Yes
2.	Black Talent Initiative	Yes
3.	Connect Ummah	Yes
4.	Downtown Somali Youth Union	Yes
5.	Focus Media Arts Centre	Yes
6.	Green Thumbs Growing Kids, Faculty of George Brown College.	N/A
7.	Hawla's Kitchen	Yes
8.	Healing as One -	Yes
9.	Kick Start Arts	Yes
10.	Lua Shayenne Dance Company	Yes
11.	Library Space	Yes
12.	Neighbourhood Legal Services	Yes
13.	Neighbourhood Pods Toronto -	Yes
14.	NRNA CANADA	Yes
15.	Prayer Space	Yes
16.	Regent Park Neighbourhood Association - RPNA	NO
17.	Regent Park Film Festival	NO
18.	Regent Park Food Partnership.	NO
19.	Regent Park Islamic Resource Centre	N/A
20.	Regent Park Social Action Group	Yes
21.	Regent Park Somali Com. Organization Inc.	Yes
22.	Regent Park Tenants Right Association	Yes
23.	Street Health	Yes
24.	The Lansdowne Cone	NO
25.	TNG Community Services	Yes
26.	Toronto Council Fire Native Cultural Centre	NO
27.	Visions of Science Network for Learning	Yes
28.	Wanasah	Yes
29.	Wise Media Inc.	Yes



SPACE NEEDS

SPACE NEEDS (3-10) YEARS

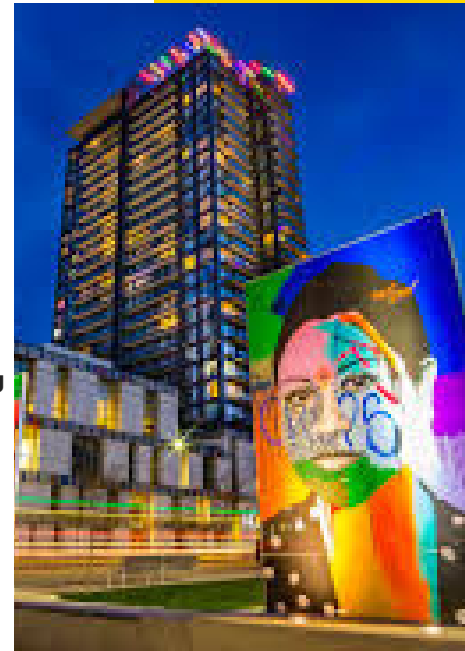
SURVEY RESULTS

The survey results captured the current and future needs of the organizations serving Regent Park. Below are the results of the organizations that wants spaces 3 - 10 years now.

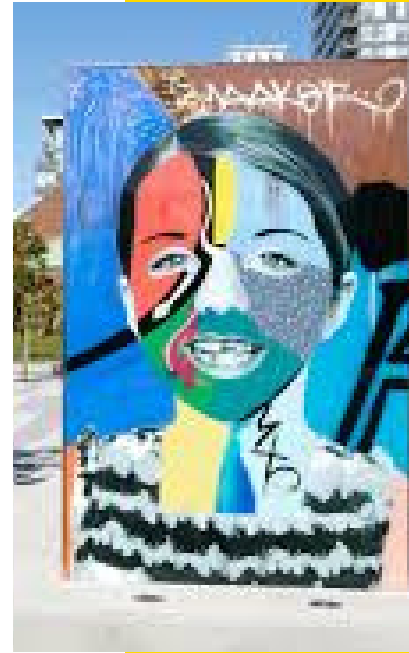
ORGANIZATION

SPACE NEEDS (3-10) YRS

1.	Acorn Arts Project	Yes
2.	Black Talent Initiative	Yes
3.	Connect Ummah	Yes
4.	Downtown Somali Youth Union	Yes
5.	Focus Media Arts Centre	Yes
6.	Green Thumbs Growing Kids, Faculty of George Brown College.	Yes
7.	Hawla's Kitchen	Yes
8.	Healing as One -	Yes
9.	Kick Start Arts	Yes
10.	Lua Shayenne Dance Company	Yes
11.	Library Space	Yes
12.	Neighbourhood Legal Services	Yes
13.	Neighbourhood Pods Toronto -	Yes
14.	NRNA CANADA	Yes
15.	Prayer Space	Yes
16.	Regent Park Neighbourhood Association - RPNA	Yes
17.	Regent Park Film Festival	Yes
18.	Regent Park Food Partnership.	N/A
19.	Regent Park Islamic Resource Centre	Yes
20.	Regent Park Social Action Group	Yes
21.	Regent Park Somali Com. Organization Inc.	Yes
22.	Regent Park Tenants Right Association	Yes
23.	Street Health	Yes
24.	The Lansdowne Cone	NO
25.	TNG Community Services	Yes
26.	Toronto Council Fire Native Cultural Centre	Yes
27.	Visions of Science Network for Learning	Yes
28.	Wanasah	Yes
29.	Wise Media Inc.	Yes



SUBMISSIONS



ACORN ARTS PROJECT

- Contact Name: Naomi Chorney
- Email: nchorney@mail.com
- Phone: 416-912-6269
- Website: acornartsproject.ca

- 1. What space do you have access to now? If you have an estimate of the size of the space, please share in square feet.** - About 700 sq ft: Two rooms on the main floor of 220 Oak St., a TCHC high-rise building. One room is About 400 sq ft programming space with tables and chairs, large windows and plenty of natural light. The other room is about 300 sq ft, and houses an electric ceramic kiln and a potter's wheel as well as shelving and storage space. The spaces are fully accessible. No access to washrooms. No access to water.
- 2. Now - Please share your space needs now - below in 100 words or less. Please include the size in square feet.** - A community hub in the building of 220 Oak St. offering a safe, judgement-free space to create art and develop skills and confidence in creating visual arts projects. Food and refreshments are usually a part of this. We could use a space in the next 6 months for storage as our TCHC site is undergoing renovations in late 2022 and into 2023.
- 3. In 10 years - Please share your space needs in 10 years - below in 100 words or less. Please include the size in square feet.** We will need an operating space out of a space at 220 Oak St. - while our regular space is under renovation. If we can't get an alternate space at 220 Oak St., then we will need an alternate space in the community. Within 2-5 years, we would like to have a **Total - 2500 sq ft** of space in total for a Community Arts hub on the Art-Hive Model. We need about 1800 sq ft of programming space for tables, chairs and classroom/artmaking sites. Pottery wheels and electric kiln. 200 sq ft of office space. 500 sq ft of dedicated storage space. Washrooms, space for electric ceramic kiln and meeting fire code, electricity requirements for kiln, plenty of natural light, access to water, wash tubs/slop sinks for cleaning art supplies, special clay traps for slop sinks.
- 4. Do you require Office space now?** Yes.
- 5. Do you require Office space in the next 10 years?** Yes.
- 6. Any other space requests not considered above?** 400 sq ft Access to an outside space in nature and a community garden. Exhibition space. It can be part of the proposed space and can include moveable, freestanding panels for hanging artwork.
- 7. When do you require the space above?** Within 2 Years. .
- 8. Please describe or list the services your Organization Provides to the Community. Please share the advocacy work you do or your mission and purpose.** Community Arts Engagement, Building social cohesion, Providing free arts programming for underserved communities, providing an Art-Hive-model, free drop-in community art-making space. We operate a free weekly drop-in open studio for creating visual arts projects, featuring 3 exhibitions annually at the 220 Oak St. site. Our exhibitions attract about 150 people at a time, including building residents and people from the broader community. The studio is available to building residents as well as members of the surrounding community. The open studio is available on Thursdays from 2:00 to 4:30. We currently serve about 25 regulars at our Oak St. site and many people who drop in to see their neighbours and get a coffee and a snack. We also operate a mobile arts unit that takes art classes to specific supportive housing sites. Residents of these sites are in supportive housing with mental health issues, acquired brain injuries, in recovery from addictions and other health issues. Teams of two professional artists travel with art materials to various housing sites provide arts programming to those individuals who don't typically have access to the arts and art making. Art making in community is transformative. Art making is inclusive and judgement-free. Our goal is to eventually having a dedicated space to operate a community arts hub on the Art-Hive model: a space where anyone from the community can congregate to make art and enjoy the company of others will making art. Art making is part of the human experience and offers profound opportunities to grow social cohesion and build community around the shared art making experience.
- 9. Please share the benefits of access to the Space requested to the Community - For example: How many Regent Park Residents would the space benefit? Please list the number of regent park residents who benefit from your work.** Looking at sustainability and food security for the neighbourhood and we are involved in initiatives combining art and sustainability
- 10. Would you like to be involved with future meetings regarding access to space in Regent Park?** Yes

**SPACE
NEEDS**

SUBMISSIONS

**BLACK
TALENT
INITIATIVE**

BLACK TALENT INITIATIVE

- Contact Name: Hildah Juma
- Email: hildahotieno@gmail.com
- Phone: 416-702-2967
- Website: blacktalentinitiative.network

- 1. What space do you have access to now? If you have an estimate of the size of the space, please share in square feet.** - We currently have a shared office space with another organization, so we don't have permanent work stations and majority of the work we do, needs team collaboration. For programming, we share space but have limited availability, so we always have to rent out space when there is conflict in scheduling the shared space
- 2. Now - Please share your space needs now - below in 100 words or less. Please include the size in square feet** - Office Space + Programming space - **750** Square feet - Programming space for community for events, meet ups and celebrations.
- 3. In 10 years - Please share your space needs in 10 years - below in 100 words or less. Please include the size in square feet.** We are a staff team of 5 individuals, we plan on expanding to 10. A new space dedicated only to BTI would help expand our programming and make it consistent and beneficial for the Regent Park Community. As BTI grows (only 2 years only right now, we know that our partnerships and funding will grow, which will mean we will need space for volunteers, planning meeting and programming which will run year round. Right now we have two cohorts of mentorship and leadership accelerator programs but if we have specific BTI dedicated space we can run bigger cohorts more often and ensure we create a permanent safer space for the community.
- 4. Do you require Office space now?** Yes
- 5. Do you require Office space in the next 10 years?** Yes.
- 6. Any other space requests not considered above?** It would be ideal for BTI to have space in an areas, community or building with other like-minded organizations. This will foster learning, growth and a stronger bond for solidarity and collaboration
- 7. When do you require the space above?** 3-5 years from now
- 8. Please describe or list the services your Organization Provides to the Community. Please share the advocacy work you do or your mission and purpose** - Black Talent Initiative's mission and vision is to help, support and assist black community members in their career journeys and work towards dismantling Anti-Black Racism in the work place, to ensure black talent can thrive.
- 9. Please share the benefits of access to the Space requested to the Community - For example: How many Regent Park Residents would the space benefit? Please list the number of regent park residents who benefit from your work.** Approximately 2,000 will benefit from the space as we run, mentoring programs, leadership accelerator workshops and other community events.
- 10. Would you like to be involved with future meetings regarding access to space in Regent Park?** Yes



**Black
History Month
2022**



**SPACE
NEEDS**

SUBMISSIONS

Connect-Uj



CONNECT UMMAH

- Contact Name: Dalia Ashry
- Email: 100connectummah@gmail.com
- Phone: 780-863-7753
- Website: connect-u.ca

- 1. What space do you have access to now? If you have an estimate of the size of the space, please share in square feet.** - No access to any space. We are operating virtually.
- 2. Now - Please share your space needs now - below in 100 words or less. Please include the size in square feet.** Office space - 400 Square feet, 3 x Executive offices - 150 feet, Storage space - 300 square feet, 1x Mentoring Programming space - 600 square feet, 1 x Conference rooms - 300 square feet, 5 x Open workstations - 60-110 square feet per person, 1 x Quiet rooms - 10-100 square feet for every 10 workstations , 3 x Office space - 450 Square feet.
Subtotal : **2700 square feet**
- 3. In 10 years - Please share your space needs in 10 years - below in 100 words or less. Please include the size in square feet** - 6 x Executive offices - 150 square feet per person- Storage space - 500 square feet, 1 x Mentoring Programming space - 900 square feet, 2x Conference rooms - 300 square feet - 600, 10 x Open workstations - 60-110 square feet per person- 5 x Quiet rooms - 10-100 square feet for every 10 workstations - **Subtotal: 5850 square feet**
- 4. Do you require Office space now?** Yes.
- 5. Do you require Office space in the next 10 years?** Yes.
- 6. Any other space requests not considered above?** Access to the following: Day care, computer lab, studio space, gym, stage, Industrial kitchen, recording studio for podcasts, edit suites, change rooms, locker rooms, yoga room, Art studio, Charging stations, donation drop off, library.
- 7. When do you require the space above?** As soon as possible.
- 8. Please describe or list the services your Organization Provides to the Community. Please share the advocacy work you do or your mission and purpose.** Our aim is to build a diverse professional Muslim network that can help our community grow through our Youth mentoring Program and Networking events. Supporting and guiding Muslim youth in the community. Helping Muslim professionals connect. Helping Muslim youth find mentor. Supporting Muslim youth facing barriers.
- 9. Please share the benefits of access to the Space requested to the Community - For example: How many Regent Park Residents would the space benefit? Please list the number of regent park residents who benefit from your work.** All Muslim youth and professionals that we hope to engage within Regent Park will use that space. It will be accessible and a safe and inclusive space for youth to meet and network.
- 10. Would you like to be involved with future meetings regarding access to space in Regent Park?** Yes.



SUBMISSIONS

DOWNTOWN SOMALI YOUTH UNION

- Contact Name: Kasim Sheikh
- Email: kasim93@hotmail.com
- Phone: 416 -402 -7940
- Website: NA

- 1. What space do you have access to now? If you have an estimate of the size of the space, please share in square feet.** - The space we have access to now is a dedicated TCHC space in phase 4/5 buildings for office and programming. Its size is about **900 sq. ft.** Please note this space we have now will be demolished because it is in phase 4/5 building. So, you can see, we are really in need of immediate accommodation prior to the demolition takes place otherwise our services which are exclusively for youth at large will be disrupted.
- 2. Now - Please share your space needs now - below in 100 words or less. Please include the size in square feet.** The space we need to provide the above-mentioned services that exclusively for our youth at large is 1,000 sq. ft.
- 3. In 10 years - Please share your space needs in 10 years - below in 100 words or less. Please include the size in square feet** - Please note, losing our TCHC dedicated space, because of the demolition, will put our youth services in jeopardy. So, we need to get accommodated before the demolition starts." "As a matter of fact, we expect the youth number will increase. So, we will need 1,600 sq. ft.
- 4. Do you require Office space now?** Yes.
- 5. Do you require Office space in the next 10 years?** Yes.
- 6. Any other space requests not considered above?** Basketball, soccer, and game fields (indoors & outdoors), conferences, events, and multi service spaces for youth. Hours of Operations - Weekdays, weekends, afterschool and evenings.
- 7. When do you require the space above?**
- 8. Please describe or list the services your Organization Provides to the Community. Please share the advocacy work you do or your mission and purpose.** Please read the answer below.
- 9. Please share the benefits of access to the Space requested to the Community - For example: How many Regent Park Residents would the space benefit? Please list the number of regent park residents who benefit from your work. -** Providing resources for training, education, and a varieties of recreational activities for youth at large. Providing youth access through outreach to programming and training that focus on intervention, counselling and rehabilitation. Helping youth succeed in terms of employment, education, sports, community safety and better relationships with community stake holders such as Toronto Police, TCHC etc. Assisting youth through engagement, mentoring, and education in becoming leaders, better front-line workers, and role models for our children. All the above services empower youth in becoming skilled, educated, and engaged leaders as well as role models for the regent Park children at large. The number of Regent Park youth the would the space and our work benefit is about **160**.
- 10. Would you like to be involved with future meetings regarding access to space in Regent Park?** Yes.



**SPACE
NEEDS**

SUBMISSIONS

FOCUS
MEDIA ARTS

FOCUS MEDIA ARTS CENTRE

- Contact Name: Adonis Huggins
- Email: adonisregentparkfocus@gmail.com
- Phone: 416 -707-7062
- Website: regentparkfocus.com

- 1. What space do you have access to now? If you have an estimate of the size of the space, please share in square feet.** - The space we have access to now is office space at Daniel Spectrum We rent three spaces for a total of **749 sq. ft.** Previous to the Spectrum we had 3,800 sq. ft. - Prior to the redevelopment we had 4200 sq. ft.
- 2. Now - Please share your space needs now - below in 100 words or less. Please include the size in square feet.** The space needs are described below.
- 3. In 10 years - Please share your space needs in 10 years - below in 100 words or less. Please include the size in square feet** - proposed **3,500 square feet** facility to carry out media arts programming including activities related to video production and broadcasting, video editing, a 24-hour internet radio broadcast station, a shared radio and music sound booth, a music recording studio, photography and graphic arts, and a gaming design/new media program. The facility would also house an office and an equipment store room. While managed by the Focus Media Arts Centre, it is the organization's vision that if resourced properly and the operating costs were reasonable, that this proposed facility would be a completely free resource centre for individual youth, grassroots groups and organizations operating in the Regent Park community wishing to engage in media practices or use the facility to produce media communicating to the members they serve. The centre would also provide training and mentoring opportunities and internships for young people aspiring to get into the creative arts. Finally housing a 24-hour radio station, the centre would also provide a safe space for youth to conduct after hours and weekend programming activities related to media arts..
- 4. Do you require Office space now?** Yes.
- 5. Do you require Office space in the next 10 years?** Yes.
- 6. Any other space requests not considered above?**
- 7. When do you require the space above?**
- 8. Please describe or list the services your Organization Provides to the Community. Please share the advocacy work you do or your mission and purpose.** Focus Media Arts Centre (charitable media arts education organization serving Regent Park since 1990) - Focus Media Arts provides professional training, mentorships and participatory media practices that profiles the community and enables the sharing of stories, experiences and perspectives on relevant matters and issues. -
- 9. Please share the benefits of access to the Space requested to the Community - For example: How many Regent Park Residents would the space benefit? Please list the number of regent park residents who benefit from your work. - Please read on page 18 - continuation.**
- 10. Would you like to be involved with future meetings regarding access to space in Regent Park?** Yes.



**SPACE
NEEDS**

SUBMISSIONS

FOCUS MEDIA ARTS

9. Please share the benefits of access to the Space requested to the Community - For example: How many Regent Park Residents would the space benefit? Please list the number of regent park residents who benefit from your work. - We are requesting a community facility space (see video link above) that would facilitate the following:

Type of Space Requested:

- 1) **Radio Regent** - a 24-hour radio control room and sound booth (for podcasting, Dj-ing, hosting live interviews and live music performances of local bands:
- 2) a **Music Recording Studio** an area or room connected with the sound booth above that would feature 4-6 computer work stations each with music recording software and keyboards;
- 3) **RPTV and video broadcast & photography studio** for live zoom productions, video interviews, news casts, drama based work and on-site photography. Room would feature studio lighting, studio cameras, teleprompters, greenscreen backgrounds.
- 4) **Video Editing studio** for video, graphic arts work. This studio would feature 12 IMac computer workstations for video editing material that was filmed on and off site.
- 5) **Game Design Lab** - area or room for workshops and new media game design production.
- 6) **Equipment Storage Room** - locked room for storage of camera equipment, Mics, Speakers, Amps, VR equipment and laptops.
- 7) **Office Administration** -area for administration activities and record keeping. Area for min of 3 workstations.

Size of Space (sq ft) - n total a minimal of **3,500 sq feet** of purpose design space (does not include washrooms).

Benefits of the Space to the Community

The space would present opportunities for community members and groups to have full access to digital media training, mentorship and equipment support related to nurturing their interests and career aspirations in: music recording; radio podcasting; Dj-ing; spoken word and music broadcasting; video production (camera, directing, script development and video editing); new media applications related to coding, game designing and VR and AR applications.

The facility would also provide opportunities for employment through a annual summer employment program and part-time staffing positions and provide opportunities for youth to generate income by provide fee for services using skills learned.

Lastly youth would learn a variety of life skills related to project management, leadership, decision making, problem solving, conflict mediation and much more.

of Residents the space would benefit - On A Daily Basis A User Friendly and Accessible Space would be used by an average of **44 - 83** people daily (generally youth and adults over the age of 14 years).

This would amount to **16,440** user to **30,480** users over a period of a year.

(* note projections based on 360 days of operation see projections below) - Min 15 -25 radio programmers including co-hosts daily (ages 14+ years); Min 8 to 15 radio guests (ages 14+ years), 6 -10 youth daily in the music lab (ages 14+ years); 10-28 users daily (ages 14+ years) involved in film, photography and video editing including interns, afterschool program participants and staff reporters. Aim is to produce 3 -4 hours content of video weekly - 10 to 15 (youth ages 14-24 years) involved in bi-weekly Gaming Design and coding workshops with open studio daily engaging min 5 youth daily who would come in to work on their projects. 15 youth involved daily in summer program during July and August.



**SPACE
NEEDS**

SUBMISSIONS



GREEN THUMBS GROWING KIDS, FACULTY OF GEORGE BROWN COLLEGE.

- Contact Name: Sunday Harrison
- Email: sunday@greenthumbsto.org
- Phone: N/A
- Website: greenthumbsto.org

1. **What space do you have access to now? If you have an estimate of the size of the space, please share in square feet. -**
2. **Now - Please share your space needs now - below in 100 words or less. Please include the size in square feet.** The Type of Space Requested - Greenhouse space with access to full sunlight with adjacent kitchen space. Size of Space (sq ft) Approximately **300 square meters**. Half for a greenhouse and half for a kitchen. The Steam House would be an excellent location for the kitchen (and an RP museum) with the greenhouse located just outside facing south. Alternatively, the kitchen can use the additional space in the new library building with the greenhouse just outside.
3. **In 10 years - Please share your space needs in 10 years - below in 100 words or less. Please include the size in square feet - Please see the above answer.**
4. **Do you require Office space now? N/A**
5. **Do you require Office space in the next 10 years? Yes**
6. **Any other space requests not considered above? N/A**
7. **When do you require the space above? N/A**
8. **Please describe or list the services your Organization Provides to the Community. Please share the advocacy work you do or your mission and purpose.** Our purpose is to create a Food Literacy Centre for Regent Park. It will actively build capacity in urban agriculture, local food, and food education, inspiring community members to become local food leaders. The Food Literacy Centre (FLC) will include a community- based kitchen and greenhouse for communal, commercial, and educational use. Please read the answer below.
9. **Please share the benefits of access to the Space requested to the Community - For example: How many Regent Park Residents would the space benefit? Please list the number of regent park residents who benefit from your work. - Benefits of the Space to the Community - Provides a needed greenhouse, teaching, community, and commercial kitchen and actively builds capacity in urban agriculture, local food, and food education for Regent Park. It will provide programs to children and youth and excellent opportunities for community groups to raise foods, favoured by our diverse community members, that require both a warm germination period and a long growing season. Details are available in our FLC proposal. Another benefit derives from the potential for the Food Literacy Centre and the Food Forest (proposed by Bowery Wilder) to work in a mutualistic relationship, with the FLC's greenhouse providing saplings and seedlings for the Food Forest and the latter providing perennial foods for use in the FLC's kitchen. # of Residents the space would benefit All residents would have priority access to these amenities. In the Immediate Study Area, approximately 1,500 students would benefit as well as the other 9,000 plus adult residents. We hope that more than 20% of locals will use these resources.**
10. **Would you like to be involved with future meetings regarding access to space in Regent Park? Yes.**



**SPACE
NEEDS**

SUBMISSIONS

Contact @hawlaskitchen on
instagram for more information



HAWLA'S KITCHEN

NOW ACCEPTING CATERING
FOR ANY EVENT!

- Contact Name: Hawla
- Email: hawlaskitchen@gmail.com
- Phone: 647-570-8213
- Website: instagram.com/hawlaskitchen

- 1. What space do you have access to now? If you have an estimate of the size of the space, please share in square feet.** - I have access to my Kitchen at home. It is very small. " If I were to have kitchen space, this would benefit many individuals in the community.
- 2. Now - Please share your space needs now - below in 100 words or less. Please include the size in square feet.** This space would help me run my dream program, the Hawla's Kitchen Food School. Our food school will provide youth from the ages of 15-19 paid opportunities to explore their passion in the hospitality sector. This program will mentor youth about the many factors that are needed to run a business and provide entrepreneurial skills. Youth will be taught proper food handling, how to cook many dishes from many cultures, playing dishes, financial literacy and money management. This program will enable youth to learn about food insecurity, healthy food choices as well as open doors for them to become entrepreneurs. A kitchen space that is at least **500 sq. ft.** to prepare big orders for the community and individuals. This space would allow for preparation, learning and packaging. It's very important to have kitchen space that is available to tenants
- 3. In 10 years - Please share your space needs in 10 years - below in 100 words or less. Please include the size in square feet** - On the next 10 years I would like kitchen space that would be at least 600 sqft for cooking space and 300 sqft for storage of pots and pans. This kitchen space would be available for the community to use and benefit from.
- 4. Do you require Office space now?** Yes.
- 5. Do you require Office space in the next 10 years?** Yes.
- 6. Any other space requests not considered above?** N/A
- 7. When do you require the space above?** As soon as possible.
- 8. Please describe or list the services your Organization Provides to the Community. Please share the advocacy work you do or your mission and purpose.** The organization provide food for the community in Regent Park, give out food to the less fortunate and also do paid gigs for events and weddings. Hawla's kitchen works with the community to engage youth in the food and entrepreneurial sector. By providing healthy and affordable foods we have created economic opportunities and motivated the entrepreneurial spirit of the food service industry in young people. he benefits of access to the Space requested to the Community.
- 9. Please share the benefits of access to the Space requested to the Community For example: How many Regent Park Residents would the space benefit? Please list the number of regent park residents who benefit from your work.** 150 regent park residents would benefit from this space, the goal is to engage as many youth and adults as possible.
- 10. Would you like to be involved with future meetings regarding access to space in Regent Park?** No.



SUBMISSIONS



HEALING AS ONE

- Contact Name: Murwan Khogali Ali
- Email: Murwan.khogali@healingasone.ca
- Phone: 647-885-4490
- Website: healingasone.ca

- 1. What space do you have access to now? If you have an estimate of the size of the space, please share in square feet.** - Daniel Spectrum Continue to have a safe space for the youth. Accessible kitchen space for local caterers to support our food insecurity initiatives.
- 2. Now - Please share your space needs now - below in 100 words or less. Please include the size in square feet.** Recreational space for basketball (indoor), self defence training and other sports. Space needs now - Accessible kitchen space for local caterers to support our food insecurity initiatives. Recreational space for basketball (indoor), self-defence training, and other sports. Accessible kitchen space for local caterers to support our food insecurity initiatives. Recreational space for basketball (indoor), self-defence training, and other sports. We are currently involved in running youth/adult basketball programs with leagues across the city. The youth program takes place in Galloway, Scarborough - the genal basketball league that captures both youth and adults takes place in Brampton. Not having access to recreational spaces that have flexible hours makes it hard for the youth to participate because of distance, and for safety reasons.
- 3. In 10 years - Please share your space needs in 10 years - below in 100 words or less. Please include the size in square feet** - In 10 years we will need a space big enough to separate the office and safe space! approximately 650sq ft. Healing as ONE is a grassroots youth group based in the Regent Park community. Industry Kitchen - the ideal size we are looking for is 1000sq ft. Recreational Space - We are looking for a space similar in size to the Regent Park South Center Gymnasium. approximately 14,560 sq. ft.
- 4. Do you require Office space now?** Yes.
- 5. Do you require Office space in the next 10 years?** Yes.
- 6. Any other space requests not considered above?** More recreational spaces.
- 7. When do you require the space above?** As soon as possible.
- 8. Please describe or list the services your Organization Provides to the Community. Please share the advocacy work you do or your mission and purpose.** Our mission is to open dialogue, pave understanding and start healing from the many pains/issues in our micro & macro communities. Our team is composed of members who experienced the challenges associated with growing up disconnected from the community, with little mentorship and opportunities for leadership, all while facing the negative influences of poverty and crime-driven neighbourhoods. Our goal is to bring the community together and highlight a type of love we should all share with our neighbours by reshaping the next generation of young people (and paving a way for them). Our aim is community engagement through the many young people living in the neighbourhood. It's taking difficult circumstances and facing young people with the need for self-development. Our vision is to create a community made up of leaders and visionaries, who are able to empower and pass this(knowledge and leadership) down to the next generation. Our dream is to create a system mobilizing young people to address their communities concerns with open dialogue, festivities and workshops(which benefits them and the community as well) Here in Healing as One we don't just look at someone being an asset to our team but also being part of our family and having that same vision to try and have an impact in our struggling community// More safe spaces across the neighborhood. We believe that the community as a whole can benefit from the access to space requested. Local entrepreneurs/mothers from the community (kitchen space), Youth/Young Adults (Recreational Gym/Spaces).Our organization captures the different demographics of the Regent Park community so that we can all unite and benefit from the spaces in our community.
- 9. Please share the benefits of access to the Space requested to the Community - For example: How many Regent Park Residents would the space benefit? Please list the number of regent park residents who benefit from your work.** -Duplicating this model.
- 10. Would you like to be involved with future meetings regarding access to space in Regent Park?** Yes.



**SPACE
NEEDS**

SUBMISSIONS

KICK START ARTS
— Igniting Creative Sparks —

KICK START ARTS

- Contact Name: Sheena D Robertson
- Email: sheena@kickstartarts.com
- Phone: 416-898-9737
- Website: kickstartarts.com

- 1. What space do you have access to now? If you have an estimate of the size of the space, please share in square feet.** - The Regent Park Film Festival allows us to use their micro space. We have worked with many children and youth over the years. Space to offer dance classes for free.
- 2. Now - Please share your space needs now - below in 100 words or less. Please include the size in square feet.** No Access to dance studios.
- 3. In 10 years - Please share your space needs in 10 years - below in 100 words or less. Please include the size in square feet** - N/A
- 4. Do you require Office space now?** Yes.
- 5. Do you require Office space in the next 10 years?** Yes.
- 6. Any other space requests not considered above?** Shared space for arts creation not designated to a specific organization - Evenings hours.
- 7. When do you require the space above?** As soon as possible.
- 8. Please describe or list the services your Organization Provides to the Community. Please share the advocacy work you do or your mission and purpose.** Free film-making and dance training and creation.
- 9. Please share the benefits of access to the Space requested to the Community - For example: How many Regent Park Residents would the space benefit? Please list the number of regent park residents who benefit from your work.** - N/A
- 10. Would you like to be involved with future meetings regarding access to space in Regent Park?** Yes.



**SPACE
NEEDS**

SUBMISSIONS



LUA SHAYENNE DANCE COMPANY

LUA SHAYENNE DANCE COMPANY

- Contact Name: Lua Shayenne
- Email: luashayennecompany@gmail.com
- Phone: 647-968-9828
- Website: luashayenne.com

1. What space do you have access to now? If you have an estimate of the size of the space, please share in square feet. - We sporadically have access to space as it is very hard for us to access space. they are around 30'x55' (1650 square) and up. We use them to rehearse and host workshops sometimes with live drumming.

2. Now - Please share your space needs now - below in 100 words or less. Please include the size in square feet. LSDC is new to the community.

Our April to August workshops plan on hosting 15 to 20 participants at a time. Our company rehearsals host a maximum of 10 to 15 artists. Space needs: 30'x55' (1650 square) and up. The size of the Regent Park Community Centre is fairly good for us. We also use live drumming (not always but it is loud) - Space needs: 30'x55' (1650 square) and up. The size of the Regent Park Community Centre is fairly good for us. We also use live drumming (not always but it is loud)

3. In 10 years - Please share your space needs in 10 years - below in 100 words or less. Please include the size in square feet - LSDC in 10 years will need space to host its new biannual festival based in Regent Park and premiering August 2022, accompanying workshops, company rehearsals and programming. Our team is growing and we just applied for operating funding

4. Do you require Office space now? Yes.

5. Do you require Office space in the next 10 years? Yes.

6. Any other space requests not considered above? Again, we also use live drumming which makes it very difficult for us to be in any space.

7. When do you require the space above? Any time starting May

8. Please describe or list the services your Organization Provides to the Community. Please share the advocacy work you do or your mission and purpose. Dance & Drum workshops, Workshops led by black female dance artists in a variety on embodied styles, Programming for Seniors, Programming for Children (West African dance, drum, song), Public Talks, Productions, Professional shows

9. Please share the benefits of access to the Space requested to the Community - For example: How many Regent Park Residents would the space benefit? Please list the number of regent park residents who benefit from your work. -

10. Would you like to be involved with future meetings regarding access to space in Regent Park? Yes.



**SPACE
NEEDS**

SUBMISSIONS



LIBRARY SPACE

- Contact Name: Miguel Avila Velarde
- Email: latinoboyto@gmail.com
- Phone: 647-708-0278
- Website: torontopubliclibrary.ca

1. **What space do you have access to now? If you have an estimate of the size of the space, please share in square feet. - N/A**
2. **Now - Please share your space needs now - below in 100 words or less. Please include the size in square feet. N/A**
3. **In 10 years - Please share your space needs in 10 years - below in 100 words or less. Please include the size in square feet - More library space for a growing population.**
4. **Do you require Office space now? Yes.**
5. **Do you require Office space in the next 10 years? Yes.**
6. **Any other space requests not considered above? N/A**
7. **When do you require the space above? ASAP**
8. **Please describe or list the services your Organization Provides to the Community. Please share the advocacy work you do or your mission and purpose. N/A**
9. **Please share the benefits of access to the Space requested to the Community - For example: How many Regent Park Residents would the space benefit? Please list the number of regent park residents who benefit from your work. Residents -over 10,000 residents that call Regent Park Home We need space as big as a Library 10,000 square feet.**
10. **Would you like to be involved with future meetings regarding access to space in Regent Park? Yes.**



**SPACE
NEEDS**

SUBMISSIONS

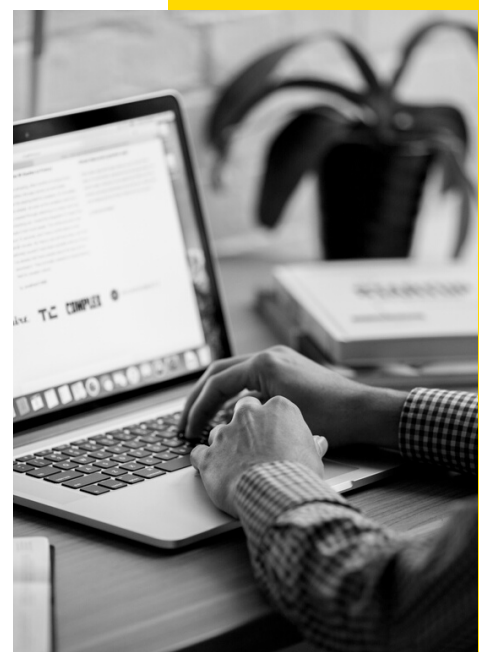


NEIGHBOURHOOD LEGAL SERVICES
Serving the Community Since 1973

NEIGHBOURHOOD LEGAL SERVICES

- Contact Name: Jennifer Stone
- Email: stonej@lao.on.ca
- Phone: 416-861-0677 x706
- Website: nlstoronto.org

1. **What space do you have access to now? If you have an estimate of the size of the space, please share in square feet.**
- 3689 square feet
2. **Now - Please share your space needs now - below in 100 words or less. Please include the size in square feet.** 3689 square feet
3. **In 10 years - Please share your space needs in 10 years - below in 100 words or less. Please include the size in square feet -**
Same as now if not more.
4. **Do you require Office space now?** Yes.
5. **Do you require Office space in the next 10 years?** Yes.
6. **Any other space requests not considered above?** Our lease will increase year on year over the next many years. (We are a few years into a 10-year lease)
7. **When do you require the space above?** In 2028.
8. **Please describe or list the services your Organization Provides to the Community. Please share the advocacy work you do or your mission and purpose.** Community legal aid clinic - We serve approximately 1600-1800 local residents per year
9. **Please share the benefits of access to the Space requested to the Community - For example: How many Regent Park Residents would the space benefit? Please list the number of regent park residents who benefit from your work. -**
10. **Would you like to be involved with future meetings regarding access to space in Regent Park?** Yes.



**SPACE
NEEDS**

SUBMISSIONS



**neighbourhood
pods TO**

NEIGHBOURHOOD PODS TO

- Contact Name: Sharlene Henry
- Email: sharlene.n.henry@gmail.com
- Phone: 647-762-0910
- Website: neighbourhoodpodsto.ca

1. **What space do you have access to now? If you have an estimate of the size of the space, please share in square feet.** - None.
2. **Now - Please share your space needs now - below in 100 words or less. Please include the size in square feet.** Community organizing space (3920 square feet): Run workshops, community gatherings - Commercial kitchen (1,051 square feet): run programs, distribute food. - Storage space (200 square feet): cold room for meats, produce. - Storage space (200 square feet): supplies, donations, non-perishable items, - Outdoor space: gathering, communing, having BBQs, outdoor storage, gardening, outdoor programming. Subtotal 5371 square ft.
3. **In 10 years - Please share your space needs in 10 years - below in 100 words or less. Please include the size in square feet** - Community organizing space (8000 square feet): Run workshops, community gatherings - Commercial kitchen (2000 square feet): run programs, distribute food. - Storage space (400 square feet): cold room for meats, produce - Storage space (400 square feet): supplies, donations, non-perishable items. - Outdoor space: gathering, communing, having BBQs, outdoor storage, gardening, outdoor programming. Subtotal 10, 800 square ft."
4. **Do you require Office space now?** Yes.
5. **Do you require Office space in the next 10 years?** Yes.
6. **Any other space requests not considered above?** Commercial kitchen with multiple cooking stations.
7. **When do you require the space above?** As soon as possible.
8. **Please describe or list the services your Organization Provides to the Community. Please share the advocacy work you do or your mission and purpose.** "Food insecurity, Vaccination Supports, Community Activism and Advocacy, Mutual Aid Work, Community Solidarity and Awareness, Virtual and In-person Community Events. We can support one another in our solidarity efforts to keep one another informed or our needs and offers, find opportunities to work together, and identify isolated community members and gaps. We acknowledge the Anishinabek (Ojibway) Mashkegowick, (Cree) and Haudenosaunee Confederacy as the guardians and traditional keepers of the land we are on. We recognize the Mississaugas of New Credit First Nation as the current holders of these traditional territories. We recognize the injustice of colonization and, in all our work, strive for equity and justice for all people.
9. **Please share the benefits of access to the Space requested to the Community - For example: How many Regent Park Residents would the space benefit? Please list the number of regent park residents who benefit from your work.** Through our advocacy and services delivery we've supported hundreds of residents in the community. Through access of space we'll be able to support more residents. We've directly supported 900 hundred Regent Park residents.
10. **Would you like to be involved with future meetings regarding access to space in Regent Park?** Yes.



**SPACE
NEEDS**

SUBMISSIONS



NON- RESIDENT NEPALI ASSOCIATION - CANADA

- Contact Name: Bishal
- Email: bishalkc05@gmail.com
- Phone: 647-739-5571
- Website: nrrcanada.org

- 1. What space do you have access to now? If you have an estimate of the size of the space, please share in square feet. - None.**
- 2. Now - Please share your space needs now - below in 100 words or less. Please include the size in square feet.** Office & Programming space - 500 - 1000 square feet/Space needed for everyday." We are more than 5000 direct members under NRNA Canada now.
- 3. In 10 years - Please share your space needs in 10 years - below in 100 words or less. Please include the size in square feet - More than 35000 Non residents Nepali live in GTA. We are looking for at least 1500- 2000 Square Feet of space in next 10 years.**
- 4. Do you require Office space now? Yes.**
- 5. Do you require Office space in the next 10 years? Yes.**
- 6. Any other space requests not considered above? N/A**
- 7. When do you require the space above? As soon as possible.**
- 8. Please describe or list the services your Organization Provides to the Community. Please share the advocacy work you do or your mission and purpose.** We are a Non for Profit organization under one umbrella NRNA ICC (Non Resident Nepali Association International Coordination Council)in 85 countries. To function as national Board of NRN Canada and national coordination council of its international organization NRNA ICC. To represent and promote the interest, right, privileges and immunities of NRN in the Canada and Nepal. To coordinate the National Board's activities with the NRN Canada and its Province Chapters. To coordinate with other national and global not-for-profit organizations with similar interests to promote and protect NRNA's interests, right, privileges and immunities.
- 9. Please share the benefits of access to the Space requested to the Community - For example: How many Regent Park Residents would the space benefit? Please list the number of regent park residents who benefit from your work. -We are registered under Federal Government as Non For Profit Organization. 75-100 In Reagent Park Community more than 5000 in GTA - Organize - Nepal Day Parade 2022, International Women's Day, Monthly Literary Program, Interaction And Community Visit, Free Driving Training, Blood Drive, Employment Taxes, Updates On Covid-19, Annual General Meeting, 2nd Nepalese Youth Conference, Youth Vision**
- 10. Would you like to be involved with future meetings regarding access to space in Regent Park? Yes.**



SUBMISSIONS



PRAYER SPACE

- Contact Name: M Naimul Islam
- Email: naimul469@gmail.com
- Phone: 647-707-6922
- Website: N/A

1. **What space do you have access to now? If you have an estimate of the size of the space, please share in square feet. - N/A**
2. **Now - Please share your space needs now - below in 100 words or less. Please include the size in square feet - 12,000 square feet.**
3. **In 10 years - Please share your space needs in 10 years - below in 100 words or less. Please include the size in square feet - N/A**
4. **Do you require Office space now? Yes.**
5. **Do you require Office space in the next 10 years? Yes.**
6. **Any other space requests not considered above? Outdoor spaces.**
7. **When do you require the space above? Soon.**
8. **Please describe or list the services your Organization Provides to the Community. Please share the advocacy work you do or your mission and purpose. Space for spiritual and community building.**
9. **Please share the benefits of access to the Space requested to the Community - For example: How many Regent Park Residents would the space benefit? Please list the number of regent park residents who benefit from your work. -Five times prayer, Friday prayer and monthly meetings Prayer hall and meeting room. More than 600 residents will benefit in Regent Park.**
10. **Would you like to be involved with future meetings regarding access to space in Regent Park? Yes.**



**SPACE
NEEDS**

SUBMISSIONS



REGENT PARK NEIGHBOURHOOD ASSOCIATION

- Contact Name: Pavithra Sulanthar
- Email: rpna.info@gmail.com
- Phone: 437-928-7154
- Website: rpna.info

1. **What space do you have access to now? If you have an estimate of the size of the space, please share in square feet. - Current Access: 200 Sq. ft.**
2. **Now - Please share your space needs now - below in 100 words or less. Please include the size in square feet.** The RPNA requires 1400 Sq. ft. now for it's activities and to support the SDP.
3. **In 10 years - Please share your space needs in 10 years - below in 100 words or less. Please include the size in square feet -** RPNA anticipates a need of 2800 Sq. ft. over the next 10years or more due to increase in population and engagement with the community.
4. **Do you require Office space now?** No.
5. **Do you require Office space in the next 10 years?** Approximately 3 years from now RPNA will require office space.
6. **Any other space requests not considered above?** N/A
7. **When do you require the space above?** In the next 3 years time.
8. **Please describe or list the services your Organization Provides to the Community. Please share the advocacy work you do or your mission and purpose.**

- **Mission** - The RPNA seeks to create a safe space where resident voices are amplified on issues that are important to our neighbourhood and takes action.

- **Vision** -The RPNA seeks to foster an inclusive, diverse and healthy neighbourhood in which all residents feel safe, welcome and at home.

Objectives:

Advocacy: Voicing neighbourhood concerns on priority issues that will benefit our entire community.

Resident Leadership: Ensure resident voices exist in all aspects of governance and implementation of the Regent Park Social Development Plan by co-chairing the SDP Stakeholders Table, Safety Network, Community Building, Economic and Employment, and Communications working groups.

Communications: Informing, consulting and engaging RPNA members and the community on neighbourhood issues and opportunities.

9. **Please share the benefits of access to the Space requested to the Community - For example: How many Regent Park Residents would the space benefit? Please list the number of regent park residents who benefit from your work. -** The entire regent park community.

10. **Would you like to be involved with future meetings regarding access to space in Regent Park?** Yes.



ADVOCACY ~ COMMUNITY WEALTH ~ COMMUNITY BENEFIT

NOVEMBER 18, 2021 | 6:00 - 8:30 P.M

ZOOM LINK: SHORTURL.AT/HWCG1

Rent to Own? MEETING ID: 836 4317 9205 PASSCODE: 316201 Good Jobs?

EMERGENCY

VIRTUAL COMMUNITY MEETING

Register ~ <https://bit.ly/RegentParkMeeting>

FOR MORE INFORMATION:
PLEASE CONTACT US AT RPNA.INFO@GMAIL.COM
PHONE: 416-625-7712 OR 437-928-7154
VISIT: WWW.RPNA.INFO
WWW.REGENTPARKCOALITION.CA/



Please access the QR Code to register.

Regent Park COMMUNITY SAFE

IS OUR PRIORITY

Monday, December 20th

We want to hear from you - Y

SCAN to Register and attend.



**SPACE
NEEDS**

SUBMISSIONS



REGENT PARK FILM FESTIVAL

- Contact Name: Nobi Nakamura
- Email: nobi@rpff.ca
- Phone: 647-207-0728
- Website: rpff.ca

1. What space do you have access to now? If you have an estimate of the size of the space, please share in square feet. - Space we have now in use year round, semi-regular use due to work-from-home;

Manager and Executive Spaces - 50 sq. ft.

Sublease Tenant Office - 30 sq. ft.

Work station and meeting space - 98 sq. ft - Common areas - 153 sq. ft.

Depends on bookings and programming increase during June ~ August, Sept ~ November

- Micro Event Space - 133 sq. ft.
- Quiet room A - 14 sq. ft.
- Quiet room B - 21 sq. ft.
- Quiet room C - 13 sq. ft.

Outdoor screening space - **19,500 sq. ft.** in Regent Park (July-August)

- Indoor screening space - 5,834 sq. ft. (November) Ada Slight Hall
- Common Space for Indoor - 2,048 sq. ft. (November) Artscape Lounge

2. Now - Please share your space needs now - below in 100 words or less. Please include the size in square feet. So roughly 330 square feet plus 181 square feet of additional office space during busy times. But based on the metric per employee it would be $5 \times 196 = 980$ square feet. When we need more space, we sometimes use the CSI meeting space upstairs for temporary meetings.

3. In 10 years - Please share your space needs in 10 years - below in 100 words or less. Please include the size in square feet - In 10 years our event space needs will increase. I think we can make do with our administrative space, but to meet the needs of the growing number of Regent Park residents, we will need more space. If we cannot get larger indoor venue or outdoor space, we may need to increase number of showings of films. With a 15% increase in attendees, we'll need;

- outdoor space **22,425 square meters**
- indoor space **9,064 square meters**

4. Do you require Office space now? No.

5. Do you require Office space in the next 10 years? Yes.

6. Any other space requests not considered above? No

7. When do you require the space above? Not at this moment Maybe sooner than 10 years.





SUBMISSIONS



REGENT PARK FILM FESTIVAL

8. Please describe or list the services your Organization Provides to the Community. Please share the advocacy work you do or your mission and purpose.

Regent Park Film Festival (RPF) is a non-profit cultural and educational media arts organization. It is Toronto's longest-running, free community film festival, and is the sole community film festival in Canada's largest and oldest public housing neighbourhood. RPF is a staple in the community. In addition to our annual festival in November, we offer year-round screenings, our annual School Program, workshops and community events at no cost.

RPF is dedicated to showcasing local and international independent works relevant to people from all walks of life. The key communities we serve are Black, Indigenous and People of Colour (BIPOC) communities, people with low-income, people who live in public housing, and Regent Park residents. The films we present break stereotypes and show that no one place or person has just one story.

The Festival started in 2003 through the efforts of a determined group of community residents and volunteers. Their goal was to bring Regent Park residents access to high quality films that resonate with their experiences.

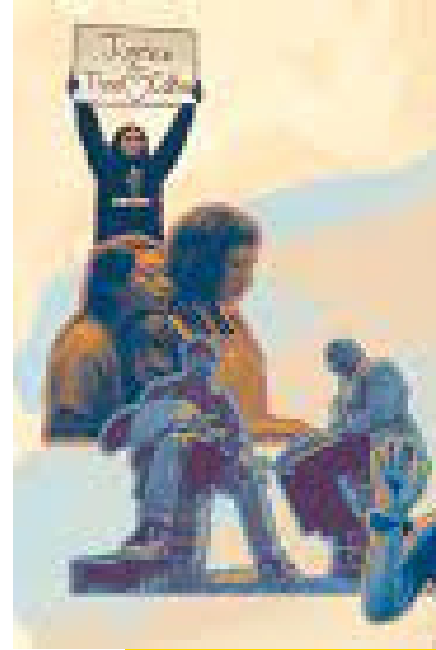
Today, as Regent Park undergoes a fifteen year re-development, the Festival also works to bring together the many diverse communities that exist in the neighbourhood to enjoy and engage with film as a means of artistic expression and a catalyst for change.

9. Please share the benefits of access to the Space requested to the Community - For example: How many Regent Park Residents would the space benefit? Please list the number of regent park residents who benefit from your work.

- Our annual festival and year round programs brings much needed cultural programming to the residents of Regent Park, possibly the largest gathering in the community.

Our highest attended year was just before the pandemic in 2019 at over 7200 attendees who enjoyed six screenings over 2 month period. A good number of attendees were made up of residents of Regent Park who attended the family friendly events. Our festival and year round programming is organized by a dedicated team of staff, which gets boosted with additional staff leading up to the festivals (Under The Stars July August, RPF November). During the year we have workshops and events in our space also.

10. Would you like to be involved with future meetings regarding access to space in Regent Park? Yes.



SUBMISSIONS OUTDOOR SPACE

REGENT PARK FOOD PARTNERSHIP

- Contact Name: Sunday Harrison
- Email: sunday@greenthumbsto.org
- Phone: N/A
- Website: greenthumbsto.org

Objective:

Create community gardens for urban agriculture opportunities for residents on green rooftops and ground-level public spaces throughout the Phase 4 & 5 plans.

Two types of space are requested:

-on building rooftops and on ground-level public spaces.

Before the revitalization, there were more than 500 community garden plots in Regent Park.

According to a garden manager interviewed in 2017, at that point, there were fewer than 200. Rooftop gardens are normally sized according to available space. Ground-level gardens average 10-30 square meters each. There should be an ample number of plots to satisfy residents.

Community gardens aids urban agriculture which improves access to and intake of fresh healthy foods, increases physical activity, encourages food literacy education. Gardens help to reduce crime, empower residents, improve mental health, and create social ties that build a strong community.

We expect over 1,500 neighbourhood residents will benefit from ample garden space. This represents just under 20% of working age adults in the immediate study area.





SUBMISSIONS

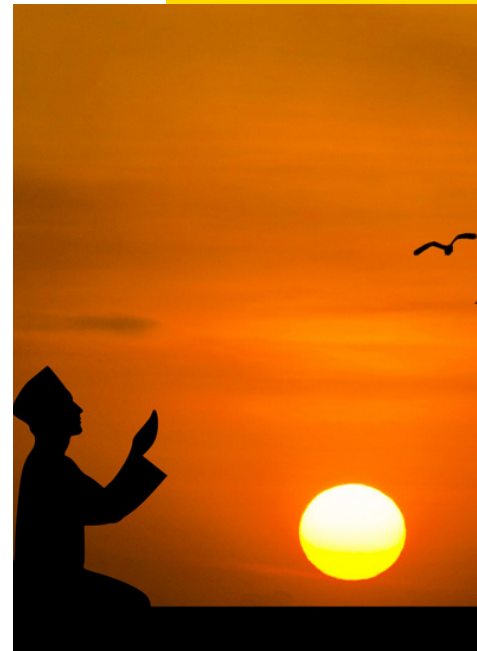
RPIRC

Regent Park Islamic Resource Centre

REGENT PARK ISLAMIC RESOURCE CENTRE

- Contact Name: Emad Hussain
- Email: usconsultant@hotmail.ca
- Phone: 416-823-5125
- Website: rpirc.ca

- 1. What space do you have access to now? If you have an estimate of the size of the space, please share in square feet.** - Currently occupied approximately 16,000 to 17,000 sq. ft. to serve our neighborhood.
- 2. Now - Please share your space needs now - below in 100 words or less. Please include the size in square feet.** T
- 3. In 10 years - Please share your space needs in 10 years - below in 100 words or less. Please include the size in square feet** - Considering current limited space, we require minimum of **8000 sq. ft.** of space. Years after years we had served our community and neighborhood.
- 4. Do you require Office space now?** Yes.
- 5. Do you require Office space in the next 10 years?** Yes.
- 6. Any other space requests not considered above?** Washroom, storage, kitchen
- 7. When do you require the space above?** As soon as possible.
- 8. Please describe or list the services your Organization Provides to the Community. Please share the advocacy work you do or your mission and purpose.** Currently 40-45% Muslim community are being served and thousands of people are getting benefitted and engaged in various activities regularly.
- 9. Please share the benefits of access to the Space requested to the Community - For example: How many Regent Park Residents would the space benefit? Please list the number of regent park residents who benefit from your work.** -
Serving our community. Taking care of our community and neighbours.
Celebrate Eid festival jointly in the community.
Weekly tafsir programs in 260 Sumach Musallah. Weekly teaching programs in 325 Gerrard Musallah. Weekly community youth motivation programs in 463 Gerard Musallah.
Participating in local events and programs.
Engagement & Community Learning: Info session and workshops on accessing program/services: Health &PF&R, TDSB, TCH and Toronto Police.
A central point of communication for the broader community.
A centre for the Muslim community to gather and worship.
Publicly accessible informal/formal space for variety of emerging initiatives and needs.
Employments & Skills development Counselling.
After School homework and reading club.
Programs for seniors. Counselling for youth and families in need. Child care facilities. Stand beside affected local and international communities. Periodic open house for the under-privileged. Gym & recreations. Social & cultural celebrations. Educational programs including safety & security.
- 10. Would you like to be involved with future meetings regarding access to space in Regent Park?** Yes.



SUBMISSIONS

REGENT PARK SOCIAL ACTION GROUP (RPSAG)

- Contact Name: Michael Rosenberg
- Email: N/A
- Phone: 416-971-9428 or call 416-761-1354
- Website: N/A

- 1. What space do you have access to now? If you have an estimate of the size of the space, please share in square feet. - N/A**
- 2. Now - Please share your space needs now - below in 100 words or less. Please include the size in square feet. - 2000 sq. ft. of space for 2 hours per week is needed for informal gatherings. Because this is not a continuous space use and no office is needed, this would most likely be done within a Community Controlled Space (i.e. an Association of Community Centres (AOCC)).**
- 3. In 10 years - Please share your space needs in 10 years - below in 100 words or less. Please include the size in square feet - 2000 sq. ft.**
- 4. Do you require Office space now? Yes.**
- 5. Do you require Office space in the next 10 years? Yes.**
- 6. Any other space requests not considered above? N/A**
- 7. When do you require the space above? As soon as possible.**
- 8. Please describe or list the services your Organization Provides to the Community. Please share the advocacy work you do or your mission and purpose.**
General advocacy on many issues, such as transit, housing and technology.
- 9. Please share the benefits of access to the Space requested to the Community - For example: How many Regent Park Residents would the space benefit? Please list the number of regent park residents who benefit from your work.**
- N/A - 100 members of the organization.
- 10. Would you like to be involved with future meetings regarding access to space in Regent Park? Yes.**



SUBMISSIONS

REGENT PARK SOMALI COMMUNITY ORGANIZATION INC.

- Contact Name: Abukar Hagi
- Email: aamudi@hotmail.com
- Phone: 416 -362- 5745
- Website: N/A

- 1. What space do you have access to now? If you have an estimate of the size of the space, please share in square feet.** - We have access to a dedicated TCHC space in phase 1/3 for office and programming. It's size is about **900 sq. ft.** Please note since this space will be demolished because it is in phase 4/5. Thus, we need immediate accommodation prior to the demolition takes place as well as for the long run (10 years or more).
- 2. Now - Please share your space needs now - below in 100 words or less. Please include the size in square feet.** The space we need now because of the eminent coming demolition in phase 4/5 is about **900 sq. ft.**
- 3. In 10 years - Please share your space needs in 10 years - below in 100 words or less. Please include the size in square feet** - As the number of the residents grow, we expect the space we need will be **1400 sq. ft.**
- 4. Do you require Office space now?** Yes.
- 5. Do you require Office space in the next 10 years?** Yes.
- 6. Any other space requests not considered above?** Spaces for conferences, events, and fairs. Weekdays, afterschool, evenings, and weekends.
- 7. When do you require the space above?** As soon as possible.
- 8. Please describe or list the services your Organization Provides to the Community. Please share the advocacy work you do or your mission and purpose.** - Help parents build healthy relationships with their youth and children (1 day/wk) - Raise parents awareness of the education system and engage them in their youths education. Engage youth actively in their success at school, in community, and in their leadership. Capacity Building for women, parents, youth and seniors. Run seniors club and community integration through tea time and field trips (for reducing social isolation. Provide support services in employment and training to women, parents, and youth. Our advocacy is focused on empowering and enhancing the community through education, awareness, mentoring and engaging.
- 9. Please share the benefits of access to the Space requested to the Community - For example: How many Regent Park Residents would the space benefit? Please list the number of regent park residents who benefit from your work.** - Help parents build healthy relationships with their youth and children (1 day/wk) - Raise parents awareness of the education system and engage them in their youths education. Engage youth actively in their success at school, in community, and in their leadership. Capacity Building for women, parents, youth and seniors. Run seniors club and community integration through tea time and field trips (for reducing social isolation. Provide support services in employment and training to women, parents, and youth. The number of Reg. Park residents who benefit now is about **400** (including parents, women, youth and children from the community at large). We need the space to provide the aforementioned services to parents, women, seniors, children, and youth.
- 10. Would you like to be involved with future meetings regarding access to space in Regent Park?** Yes.



**SPACE
NEEDS**

SUBMISSIONS

REGENT PARK TENANTS RIGHT ASSOCIATION

- Contact Name: Shafiqul Hoque
- Email: shafiqulhoque2@gmail.com
- Phone: 647-717-5206
- Website: N/A

- 1. What space do you have access to now? If you have an estimate of the size of the space, please share in square feet.** - None
- 2. Now - Please share your space needs now - below in 100 words or less. Please include the size in square feet.** The current space needs is 500 sq. ft.
- 3. In 10 years - Please share your space needs in 10 years - below in 100 words or less. Please include the size in square feet**
- Office space - 450 square feet - Storage space - 150 square feet - Programming space - 250 square feet - Sub Total = **850 sq. ft.**
- 4. Do you require Office space now?** Yes.
- 5. Do you require Office space in the next 10 years?** Yes.
- 6. Any other space requests not considered above?** Outdoor spaces for recreations.
- 7. When do you require the space above?** We need the space immediately.
- 8. Please describe or list the services your Organization provides to the Community. Please share the advocacy work you do or your mission and purpose.** The association advocates on behalf of its members regarding rent to own program, safety and housing needs.
- 9. Please share the benefits of access to the Space requested to the Community - For example: How many Regent Park Residents would the space benefit? Please list the number of regent park residents who benefit from your work.** - The association represents over 900 members, many of whom are regent park residents. With access to office space, we will be able to support our members with services and advocacy. "We require immediate office and storage spaces for our activities. We require **500 sq. ft.** now.
- 10. Would you like to be involved with future meetings regarding access to space in Regent Park?** Yes.

Regent Park Tenants Rights Association

(Corporation Number: 1161877-6)

On behalf of the RPTRA, we would like to bring to your attention 6 matters that are of great concern to our community:

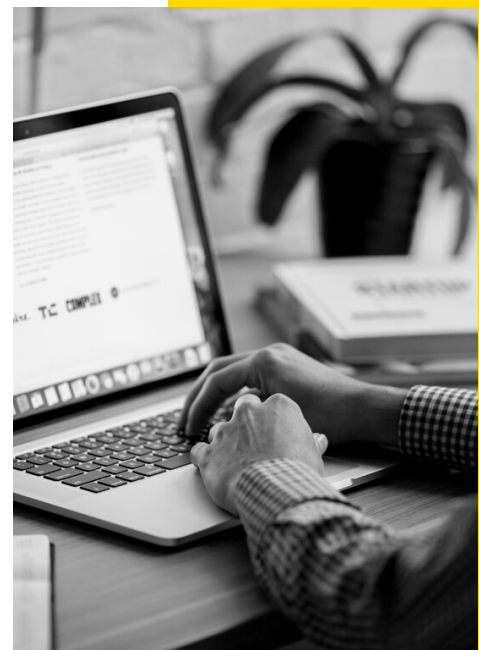
1. Rent To Own For Low-Income Tenants: We are requesting to implement this policy for our tenants. Many countries have already applied this policy to their own tenants. The people in Toronto Community Housing and around Toronto informed us to apply for this policy to help families. Different Toronto Community Housing tenant representatives contacted us to apply for rent to own for low-income people.

We request that every tenant have the opportunity to be able to rent to own for TCHC tenants.

2. Safety And Security (Gun Violence): Recently, there have been many gun-related incidents in Regent Park. For the last twenty years, Cabbagetown (north of Regent Park) has not experienced any crime or gun violence in the last 20 years. The community has been wondering why Cabbagetown is safe and well protected but not regent park. There has been a continuous increase in violence as a result our community is afraid, especially the elderly and children. The people in the community are losing their trust in TCHC, TCHC security and the police.

We **demand** additional foot and bike patrols by the Toronto Police Service as well from TCHC security. We are requesting more CC cameras in Regent Park to reduce the crime rate and make the residents feel safe.

3. Creating Jobs For The Current Generation: When Canadian students finish their education, they are not able to immediately get jobs due to foreigners coming to Canada. These foreigners are able to easily get jobs, while our youth are becoming depressed and getting themselves involved with crime. They cannot pay their loans and their loans accumulate higher because of the interest charges.



**SPACE
NEEDS**

SUBMISSIONS

Street Health

Reducing the harms caused by homelessness

STREET HEALTH

- Contact Name: Kapri Rabin
- Email: kapri@streethealth.ca
- Phone: 416-921-8668 ext 231
- Website: streethealth.ca

1. **What space do you have access to now? If you have an estimate of the size of the space, please share in square feet. - N/A**
2. **Now - Please share your space needs now - below in 100 words or less. Please include the size in square feet.** Street Health operates out of a building at Dundas and Sherbourne- however we do not have space to run our drop in programs. We require program space to provide drop in programs that has access to a kitchen and is wheel chair accessible - min space 1000-1500 sq. ft.
3. **In 10 years - Please share your space needs in 10 years - below in 100 words or less. Please include the size in square feet - 1000-1500 sq. ft. of programming space to provide drop in programming that is wheel chair accessible and has access to a kitchen and washroom- all on the same ground floor.**
4. **Do you require Office space now? Yes.**
5. **Do you require Office space in the next 10 years? Yes.**
6. **Any other space requests not considered above? Same as above.**
7. **When do you require the space above? As soon as possible.**
8. **Please describe or list the services your Organization Provides to the Community. Please share the advocacy work you do or your mission and purpose.** Street Health works to improve the mental and physical health of people who are homeless and precariously housed who are in the downtown east including regent Park. We provide nursing, mental health case management, Identification replacement, Overdose prevention, harm reduction services, outreach and safe supply programs. We have a long history of advocating with people who experience homelessness for affordable housing, access to health services, overdose prevention and harm reduction supports.
9. **Please share the benefits of access to the Space requested to the Community - For example: How many Regent Park Residents would the space benefit? Please list the number of regent park residents who benefit from your work. -All of our clients are from the Moss Park, St. James Town and Regent park communities. 50 individuals would benefit.**
10. **Would you like to be involved with future meetings regarding access to space in Regent Park? No**



SUBMISSIONS

THE LANSDOWNE CONE

- Contact Name: Denise Soueidan-O'Leary
- Email: thelansdownecone@gmail.com
- Phone: 647-296-4552
- Website: thelansdownecone.ca



- 1. What space do you have access to now? If you have an estimate of the size of the space, please share in square feet.** - Youth Employment Support; Local Economic Development co located in the old Paintbox space - **300 sq. ft.**
- 2. Now - Please share your space needs now - below in 100 words or less. Please include the size in square feet.** - N/A
- 3. In 10 years - Please share your space needs in 10 years - below in 100 words or less. Please include the size in square feet** - we would love a permanent home for the parlour in regent park. 600 sq. ft. with space for a small seating area (for rainy days), and space that could be use for community engagement: gallery walls, fundraisers, Halloween haunted houses etc. **600-1000 sq. ft.**
- 4. Do you require Office space now?** No.
- 5. Do you require Office space in the next 10 years?** No.
- 6. Any other space requests not considered above?** No.
- 7. When do you require the space above?** N/A
- 8. Please describe or list the services your Organization Provides to the Community. Please share the advocacy work you do or your mission and purpose.** The Lansdowne Cone has been a popular destination for regent Parkers since we moved in 2020. Residents have express joy with having a local option that is within walking distance, and is involved in the community. It's a public space open to all Regent Parkers, and serving and average of 200 customers a day. we also run a youth employment program, creating job opportunities for 6-8 Regent Park youth each season.
- 9. Please share the benefits of access to the Space requested to the Community - For example: How many Regent Park Residents would the space benefit? Please list the number of regent park residents who benefit from your work.** - Youth Employment Support; Local Economic Development - It's a public space open to all Regent Parkers, and serving and average of 200 customers a day.
- 10. Would you like to be involved with future meetings regarding access to space in Regent Park?** Yes.

**SPACE
NEEDS**

SUBMISSIONS



CENTRAL NEIGHBOURHOOD HOUSE
NEIGHBOURHOOD LINK
ST. STEPHEN'S COMMUNITY HOUSE

TNG COMMUNITY SERVICES

- Contact Name: Serena Nudel
- Email: serena.nudel@tngcs.org
- Phone: 416-676-9793
- Website: theneighbourhoodgroup.org

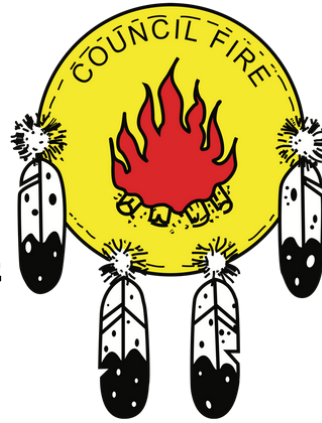
- 1. What space do you have access to now? If you have an estimate of the size of the space, please share in square feet.** - We have our organization Central Neighbourhood House and operate childcare out of 3 schools in the area.
- 2. Now - Please share your space needs now - below in 100 words or less. Please include the size in square feet.** T
- 3. In 10 years - Please share your space needs in 10 years - below in 100 words or less. Please include the size in square feet** - We would like to have 1 large office for our 2 YOWs at approximately 300 sq. ft. We would like to be able to expand childcare services to the community and would benefit from 2500-3000 square feet.
- 4. Do you require Office space now?** Office space for YOWs is needed immediately. Childcare space is needed at a later time.
- 5. Do you require Office space in the next 10 years?** We would need office space if we had childcare space.
- 6. Any other space requests not considered above?** Childcare.
- 7. When do you require the space above?** Immediately.
- 8. Please describe or list the services your Organization Provides to the Community. Please share the advocacy work you do or your mission and purpose.** Our multi-service agency provides a wide range of programs and services that create opportunities to improve and enhance peoples lives and to help them live independently and with dignity. We serve frail seniors, marginalized children and youth, those who are searching for employment, people who are homeless or precariously housed and people with mental health challenges. We offer a wide range of children and youth programs including a Youth Outreach Worker Program and Weekend Youth Program. We also offer daycare services for children 0-12 in the community.
- 9. Please share the benefits of access to the Space requested to the Community - For example: How many Regent Park Residents would the space benefit? Please list the number of regent park residents who benefit from your work.** - We would be able to provide services to over 250 youth/year and depending on the space allocated we could provide childcare to 60+ families.
- 10. Would you like to be involved with future meetings regarding access to space in Regent Park?** Yes.



**SPACE
NEEDS**

SUBMISSIONS

TORONTO COUNCIL FIRE NATIVE CULTURAL CENTRE



- Contact Name: Joan McDougall
- Email: lbs@councilfire.ca
- Phone: 437-241-5421
- Website: new.councilfire.ca

1. **What space do you have access to now? If you have an estimate of the size of the space, please share in square feet. -**
2. **Now - Please share your space needs now - below in 100 words or less. Please include the size in square feet.** Our LBS program would like to have access for outside activities – this non for profit organization would like to bring our participants together for outside gatherings when the season/ weather allows. As an organization our target group is a combination of learners who identify as being Indigenous or are residents of Regent Park, we serve adults in a learning environment where we deliver services for Computer Class, Math, Communications and Art Therapy. We refer learners to services available from within our community to support their material needs and their mental health and wellness needs. Before covid changed the model in which we adapted to to continue providing services for Literacy Basic Skills, we regularly gathered to share celebrations and achievements for individuals and for our learning community. **800 - 1200 sq. f**
3. **In 10 years - Please share your space needs in 10 years - below in 100 words or less. Please include the size in square feet - Same as above - 1200 sq. ft.**
4. **Do you require Office space now? No.**
5. **Do you require Office space in the next 10 years? Yes.Potentially.**
6. **Any other space requests not considered above?** We require access to a field, gardens, and patio for a BBQ. Will the organizations that are accepted to use space as needed have access to facilities (washrooms) during the time they use the space?
7. **When do you require the space above?** When the weather and season permit outside activities.
8. **Please describe or list the services your Organization Provides to the Community. Please share the advocacy work you do or your mission and purpose.** The cultural centre provides services for meal programs, foodbank, family and child services for pregnant mothers and families of infants/children (parenting classes, cooking, material needs, peer support), services for older children and youth (cultural teachings, physical activities like dance and sports, camping/outings, counseling, tutoring), the LBS as described above, employment services, Health Resolution Services for IRSS (Indian Residential School Survivors), services for I'm a Kind Man programming, MMIWG & Family Wellness (counseling & referrals) and core services which includes the Legacy Project, Spirit Garden, there is a separate program that provides workshops for health related concerns of the registrants for diabetes, developing habits for healthy eating/activities, cooking, smoking cessation, etc. and another program that provides "Meals on Wheels," cooking classes, and peer support .Most of the staff members in the centre provide resolutions for community members requiring advocacy for health and wellness needs, including material needs and referrals to counseling services. The centre is closely involved in terms of gathering information for how the city plans and implements strategies for addressing poverty; for example, the centre has been able to access emergency supports and services through city-sponsored initiatives that helps clients have digital access to information and services.



**SPACE
NEEDS**

SUBMISSIONS

TORONTO COUNCIL FIRE NATIVE CULTURAL CENTRE



9. Please share the benefits of access to the Space requested to the Community - For example: How many Regent Park Residents would the space benefit? Please list the number of regent park residents who benefit from your work.

On a yearly basis where our program serves 130 registered learners, about 40% of those registered are Regent Park residents.

Our community would benefit in several ways - it would give us outside space to enjoy the elements in a space that is close to our physical offices/classrooms, it would create an opportunity where some of our class members would be in a sense, 'hosting' as it is where they live (this is one of the ways in which we build capacity within a rubric that includes doing peer support), having a welcome space for us to expand our programming would serve to help us grow as a program and be part of the local area in a community-based level, it would serve to help participants see that this kind of exchange is vital for growth, relationship-building and to be seen as important components (residents) of how a neighbourhood is shaped, maintained and measured for it's wellness.

10. Would you like to be involved with future meetings regarding access to space in Regent Park? Yes.

LIM LEEMPT
(OKANAGAN FOR THANK YOU)



FRIDAY, MARCH 25TH

TORONTO CENTRE DEVELOPMENTS

JOIN US FOR A COMMUNITY DISCUSSION REGARDING DEVELOPMENTS IN OUR NEIGHBOURHOODS

4 - 6 PM

PLEASE ACCESS THE QR CODE TO REGISTER.

RSVP:





SUBMISSIONS

visions

OF SCIENCE

VISIONS OF SCIENCE NETWORK FOR LEARNING

- Contact Name: Turfah Tabish
- Email: turfah.tabish@vosnl.org
- Phone: 416-432-5295
- Website: vosnl.org

- 1. What space do you have access to now? If you have an estimate of the size of the space, please share in square feet.** - Office space at 71 Regent Park boulevard, approximately - 600 sq. ft.
- 2. Now - Please share your space needs now - below in 100 words or less. Please include the size in square feet.** Our work supports young people, family members, and educators in Regent park as well as across the greater Toronto area. We offer direct programming in Regent Park.
- 3. In 10 years - Please share your space needs in 10 years - below in 100 words or less. Please include the size in square feet .**
Our hopes with additional space is to secure additional office space for our growing teams as well as programming space open to community members to engage in.
We are looking to secure space to act as a community STEM learning hub - with state of the art equipment to promote and create additional opportunities to high quality STEM learning for young people in the Regent Park community.
" Office Space: 500-800 sq. ft.
Programming Space for STEM Learning Hub: 900-2000 sq. ft.
" Office Space: 500-1000 sq. ft.
Programming Space for STEM Learning Hub: 900-2500 sq. ft. "
Wanted to highlight, beyond office use, we are looking to secure programming space to build a high quality STEM learning hub for young people in the Regent Park community. Total: 3500 sq. ft.
- 4. Do you require Office space now?** Yes.
- 5. Do you require Office space in the next 10 years?** Yes.
- 6. Any other space requests not considered above?** Stem Learning Hub - This has been included in the above request.
- 7. When do you require the space above?** As soon as possible for the programming space - we are looking to build something out over the next few years.





SUBMISSIONS

visions

OF SCIENCE

8. Please describe or list the services your Organization Provides to the Community. Please share the advocacy work you do or your mission and purpose.

We are committed to advancing STEM equity by focusing our effort towards youth and communities who experience significant barriers to participation.

We facilitate community based youth engagement, strengthen youth support networks, and advocate for systems that ensure equitable STEM education, and opportunity.

We believe that when youth understand the possibilities within STEM and have unhindered access to explore every opportunity, they have the full power to choose how they contribute to shaping the world around them.

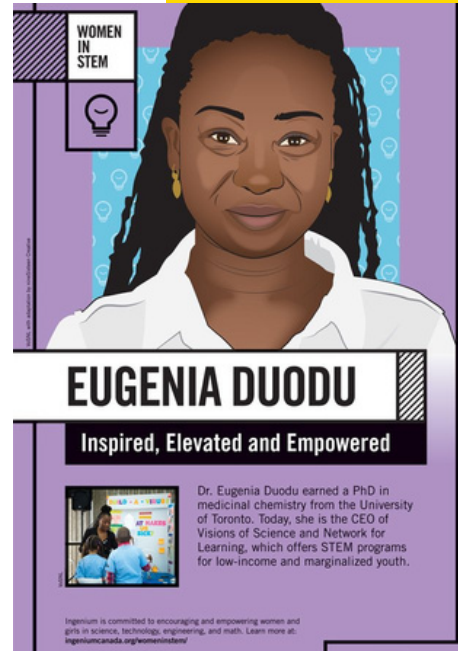
They are empowered with the relevant skills and knowledge to be leaders in their community, agents of change for society, and good stewards of the planet.

Our activities include:

- Supporting children and youth ages 8-25 through age specific programming. (Clubs, camps, leadership programs, internship opportunities, career development, scholarship opportunities with a focus on meaningful engagement in STEM fields.
- Working with educators and community members providing workshops, resources, and programming to better position them to support children and youth as well as advocate for their needs.
- Advocacy work including public awareness and knowledge sharing activities to increase equitable access to STEM.

9. Please share the benefits of access to the Space requested to the Community - For example: How many Regent Park Residents would the space benefit? Please list the number of regent park residents who benefit from your work. - N/A

10. Would you like to be involved with future meetings regarding access to space in Regent Park? Yes.



SUBMISSIONS



WANASAH: MENTAL HEALTH SERVICES FOR BLACK YOUTH

- Contact Name: Namariq Ahmed
- Email: namariq.ahmed@wanasah.ca
- Phone: 647-502-8064
- Website: wanasah.ca

- 1. What space do you have access to now? If you have an estimate of the size of the space, please share in square feet.** - We do not have our own space, we are currently sharing Dixon Hall and K-Club space to see clients. We also have a meeting room on 230 Sackville Street given to us by TCHC for a period to see clients. We do not have any office space or additional space to see clients.
- 2. Now - Please share your space needs now - below in 100 words or less. Please include the size in square feet.** Youth have shared with us they want to see us in our own private space and not shared space and virtual is not sustainable. The space needs include a Conference room for staff meetings as well as caregiver and youth groups. 2 Executive Office for our management and staff. About 3 quiet rooms for therapy sessions. A bonus would be a common space. I hope we will not be needed as an organization, however we have grown this year alone as the need arises and the population will increase.
- 3. In 10 years - Please share your space needs in 10 years - below in 100 words or less. Please include the size in square feet** - In the future, we may need 4 executive offices, 6-10 quiet rooms and 2 conference rooms. The reason for this is that the need will definitely increase, especially post pandemic that will last 5-10 years for our young people. Total: 300 + 400 + 300 + 300 = **1300 sq. ft.**
- 4. Do you require Office space now?** Yes.
- 5. Do you require Office space in the next 10 years?** Yes.
- 6. Any other space requests not considered above?** Outside space would also be great for activities with young people. Private, safe and confidential space - that is appropriately ventilated and sound insulation. Also, a space that can be accessed by the public securely. Safety.
- 7. When do you require the space above?** As soon as possible.
- 8. Please describe or list the services your Organization Provides to the Community. Please share the advocacy work you do or your mission and purpose.** Wanasah is a mental health agency created to address the urgent mental health needs of Black youth and their families in Regent Park and neighbouring areas, in downtown Toronto. We are a space where Black youth and their families recognize themselves. Our mission is to improve access to effective and holistic mental health services for Black youth and their families in the GTA. In less than one year of operation, we have served over 300 Black youth and family members. We have also provided almost 20 crisis supports to families dealing with tremendous crisis including gun violence, suicides, overdoses, etc. .
- 9. Please share the benefits of access to the Space requested to the Community - For example: How many Regent Park Residents would the space benefit? Please list the number of regent park residents who benefit from your work.** We have also provided almost 20 crisis supports to families dealing with tremendous crisis including gun violence, suicides, overdoses, etc.
- 10. Would you like to be involved with future meetings regarding access to space in Regent Park?** Yes.



**SPACE
NEEDS**

SUBMISSIONS

ESIMEDIA

WISE MEDIA INC.

- Contact Name: Sam Haque
- Email: sam@mywisemedia.com
- Phone: 647-569-0187
- Website: mywisemedia.com

- 1. What space do you have access to now? If you have an estimate of the size of the space, please share in square feet.** - N/A
- 2. Now - Please share your space needs now - below in 100 words or less. Please include the size in square feet.** Since 2016. I have been attending meeting after meeting for economic development in Regent Park and the acquisition of affordable space for entrepreneurs of Regent Park. For 6 years now I have been told that while economic development is a core focus of the SDP process, there are no business ventures that have developed that provide jobs, education and resources to gain employment in high paying fields. I don't see any evidence that economic growth is being prioritized to the level other divisions of the SDP, thus my optimism is bleak on that front. I will believe it when I see it.
- 3. In 10 years - Please share your space needs in 10 years - below in 100 words or less. Please include the size in square feet** - 450 square feet for production equipment and meeting space with community members.
- 4. Do you require Office space now?** Yes.
- 5. Do you require Office space in the next 10 years?** Yes.
- 6. Any other space requests not considered above?** Ideally a storefront with easy public access.
- 7. When do you require the space above?** As soon as possible.
- 8. Please describe or list the services your Organization Provides to the Community. Please share the advocacy work you do or your mission and purpose.** Graphic design and printing services for business and community members. Helping existing local businesses lower advertising costs and helping community members launch their entrepreneurial ventures at an affordable price.
- 9. Please share the benefits of access to the Space requested to the Community - For example: How many Regent Park Residents would the space benefit? Please list the number of regent park residents who benefit from your work.**
Our work has supported the success of various businesses in Regent Park like Infiniguard and Visions of Tomorrow. There are many youths who we have taught in the past and would like to continue educating in the business of design to obtain employment with the Directors Guild of Canada and IATSE 873 unions. So far we were able to connect 3 youth to this life changing industry and we believe we can do more with a dedicated location accessible to the public.
- 10. Would you like to be involved with future meetings regarding access to space in Regent Park?** No.



SPACE NEEDS

SUBMISSION - GOVERNANCE

AOCC (ASSOCIATION OF COMMUNITY CENTRES) SPACE IN REGENT PARK

- Contact Name: Michael Rosenberg
- Email: N/A
- Phone: 416-971-9428 or call 416-761-1354
- Website: N/A

This is a request for an Association of Community Centres (AOCC) space in Regent Park. The space would be set up through a Board of Management under the City of Toronto, and therefore there is not a specific individual non-profit organization that the request comes from.

This request is for 10,000 sf, at a minimum 6,000 sf. The space should have some administrative offices and a range of sizes of general purpose rooms.

Purpose

This space is needed for organizations formed in the future and changing space needs of existing organizations, since specific future space needs cannot be fully enumerated now. This will include bookable (i.e. non-continuous use) and dedicated rooms/spaces allocated by and available on terms set by the community. The AOCC structure which is run by a community board of management is the best form of open and community directed decision making for the space.

Access to space on a one-time, regular or continuous basis is needed by many groups, some of which involve considerations such as: no cost, low cost, unincorporated groups/organizations, use of space outside of regular business hours

We want to ensure that some of the space built in phases 4 and 5 will be Community Controlled. This can be implemented as an Association of Community Centres (AOCC) similar to **519 Community Centre** or **Ralph Thornton Centre**, as specified in How to, below.

If TCHC plans to allocate the existing or proposed zoned square footage of space for services and/or request-for-expression-of-interest space, the amount of space in the rezoning application will need to be increased so that there is also space for an AOCC.

Additional information - How to provide the space

City, TCHC and the Developer agree that an Association Of Community Centres (AOCC) Community Board of Management will control a specific amount of space, with the City of Toronto being the formal owner of the property and employer of anyone hired by the board.

Space is built, either by re-allocating a part of the space that was already planned to be built or by approving an addition to the amount of space to be built.

City of Toronto, TCHC and the Developer agree which of them will pay for ongoing maintenance costs.

A Terms of Reference for the AOCC Board of Management is created and approved by City Council (if necessary). The membership of the Board should be appointed (or recommended to City Council if necessary) by a community Annual General Meeting.



★ **WE WANT TO HEAR FROM YOU**

WHAT SPACE DO YOU HAVE ACCESS TO NOW & WHAT ARE YOUR NEEDS 10 YEARS FROM NOW?

spaces

INDOOR & OUTDOOR

SPACE NEEDS LINK:
[HTTPS://BIT.LY/REGENTSPACEFORM](https://bit.ly/regentspaceform)

Please access the QR Code to access the Form.



PLEASE SUBMIT YOUR SPACE NEEDS BY



SPACE NEEDS

THE SURVEY

MARCH 9TH - 16TH 2022

- While the SDP is collecting additional information for their own purposes, the information being collected in this section will form as part of the Community Services and Facilities Report as it relates to the Regent Park Phases 4 & 5 Revitalization future Zoning By-law Amendment application. The categories below are an opportunity for community members and organizations to outline their requests for space within the phases 4 and 5 lands of Regent Park.
- By providing a request for space does not guarantee that a space will be provided. This section is for the inventory purposes, there will be an evaluative process with criteria developed, and the evaluation process does not guarantee that the requests for space are going to be provided. In order for community requests for space to be considered, members and organizations must provide information within each of the categories outlined below. Please meet with your team and go through the following questions before completing the form below that consists of eleven survey questions:

Short Form Link: <https://bit.ly/RegentSpaceForm>

Survey Questions will focus on:

- What space do you have access to now? If you have an estimate of the size of the space, please share in square feet.
- Request for Space - Please tell us what space needs you require now and in the next 10 years. Please list all your space needs. For example: Group A

Office space - 450 Square feet.
Storage space - 500 square feet.
Programming space - 300 square feet
Sub-Total: 1250 square feet.

Key: Help with calculating space needs: Follow the advice below..

Office Space - The amount of space per employee in 2020 was 196 square feet. That includes dedicated desk space and the space surrounding it, and should also take into account the amount of space in meeting rooms and common areas. Please use the metrics below for guidance):

Storage Space - include current needs and future needs separately.
Activity/Programming Space - specify the space needs or facilities required. Examples:

Common areas - 80-100 square feet per person
Conference rooms - 25-30 square feet per person
Executive offices - 90-150 square feet per person
Open workstations - 60-110 square feet per person
Quiet rooms - 10-100 square feet for every 10 workstations

Outdoor or Indoor Space - Please list in your request whether you would like access to outdoor space and for what programming. For example? Do you require access to a field, gardens, patio for a BBQ?

3. Now - Please share your space needs now - below in 100 words or less. Please include the size in square feet.

4. 10 years - Please share your space needs in 10 years - below in 100 words or less. Please include the size in square feet.

5. Do you require Office space now?

6. Do you require Office space in the next 10 years?

7. Any other space requests not considered above?

8. When do you require the space above?

9. Please describe or list the services your Organization Provides to the Community. Please share the advocacy work you do or your mission and purpose.

10. Please share the benefits of access to the Space requested to the Community - For example: How many Regent Park Residents would the space benefit? Please list the number of regent park residents who benefit from your work.

11. Would you like to be involved with future meetings regarding access to space in Regent Park?



Informed by organizations serving Regent Park and advocating for social cohesion and inclusion.

REGENT PARK SPACE NEEDS

MARCH 16th 2022 - ASSESSMENT

www.regentparksocial.org

COMMUNITY BUILDING WORKING GROUP



WE WANT TO HEAR FROM YOU
WHAT SPACE DO YOU HAVE ACCESS TO NOW & WHAT ARE YOUR NEEDS 10 YEARS FROM NOW?

spaces

INDOOR & OUTDOOR

JOIN US ON FRIDAY, MARCH 18TH FROM 11 AM - 12 PM TO REVIEW THE SURVEY RESULTS BEFORE SUBMISSION.

THANK YOU FOR YOUR SUBMISSION



SPACE NEEDS

RECOMMENDATIONS

ENGAGEMENT AND OUTREACH

- Duration: The Survey was promoted for only seven (7) days between - March 9th - 16th engaging with 2605 indirectly via social media. We also had over 30 participants at the three information session(s).

Recommendation 1: The survey should be promoted intentionally for over 30 days to accommodate weekly information sessions, to better support grassroots organizations communicate their indoor and outdoor space needs.

- Information Session(s): Three information sessions were hosted Friday, March 11th, Tuesday, March 15th and Friday, March 18th to build a shared understanding of the space needs. We had TCHC and Tridel representatives. Participants will benefit from professional supports from the community with the space assessment of organizations servicing regent park.

Recommendation 2: The developer proponents should provide adequate professional support for organizations to better appreciate the nuances of the space requests. Specifically workshops, surveys, questionnaires and meetings to better understand the indoor and outdoor space needs.

- Social Development Plan: The Regent Park Social Development Plan was developed through community consultations to ensure social inclusion and social cohesion of residents throughout the duration of the Regent Park revitalization. In 2017, after ten years of revitalization, community partners, residents and City staff updated the Social Development Plan and identified fifty three actions for implementation. Nineteen of these actions have been identified as priority and are ready for implementation while the remaining thirty four actions require further development.

Recommendation 3: The planning committee and working groups of the social development plan stakeholders table should be consulted with regards to space needs for the projects funded by the City of Toronto through the social development plan deep dive community recommendation process. The grassroots organizations supporting the social development plan alongside other stakeholders will likely have more success with the space supports required for a collective goal of social cohesion and inclusion.

THANK YOU - FOR PARTICIPATING

- Thanks to every participant who submitted your organization's space needs without much notice.
- The report was circulated on Wednesday, March 30 th 2022 via email - also available for download - regentparksocial.org.
- Tridel and TCHC received all the data outlined above and are working with the community to inform the 2022 Community Services and Facilities report.
- We appreciate the participation of Toronto Community Housing Corp. - **Holly Carrie-Mattimoe, Joyce Ho, Munira Al-Amudy and Tereza Todorova**
- Thank you to the community stakeholders - Tridel - **Taylor Gascoigne and Bryan Sherwood**



Informed by organization serving Regent Park and advocating for social cohesion and inclusion

REGENT PARK SPACE NEEDS

MARCH 16th 2022 - ASSESSMENT

www.regentparksocial.org

COMMUNITY
BUILDING
WORKING GROUP



THANK YOU.

48

SPACE NEEDS

THANK YOU REGENT PARK

GRASSROOT ORGANIZATIONS ARE AN IMPORTANT BACKBONE OF OUR COMMUNITY.



Informed by organizations serving Regent Park and advocating for social cohesion and inclusion.

REGENT PARK SPACE NEEDS

MARCH 16th 2022 - ASSESSMENT

www.regentparksocial.org

COMMUNITY BUILDING WORKING GROUP



Contact @hawaskitchen on Instagram for more information



NOW ACCEPTING CATERING FOR ANY EVENT!



THANK YOU.

SPACE NEEDS

**THANK YOU
REGENT PARK**

GRASSROOT ORGANIZATIONS ARE AN IMPORTANT BACKBONE OF OUR COMMUNITY



Informed by organizations serving Regent Park and advocating for social cohesion and inclusion.

**REGENT PARK
SPACE NEEDS**

MARCH 16th 2022 - ASSESSMENT

www.regentparksocial.org



neighbourhood pods TO



RPNA
Regent Park Neighbourhood Association
Stronger Together



CENTRAL NEIGHBOURHOOD HOUSE
NEIGHBOURHOOD LINK
ST. STEPHEN'S COMMUNITY HOUSE



WE WANT TO HEAR FROM YOU
WHAT SPACE DO YOU HAVE ACCESS TO NOW & WHAT ARE YOUR NEEDS 10 YEARS FROM NOW?
spaces
INDOOR & OUTDOOR

SPACE NEEDS LINK:
[HTTPS://BIT.LY/REGENTSPACEFORM](https://bit.ly/regentspaceform)

Please access the QR Code to access the Form.



PLEASE SUBMIT YOUR SPACE NEEDS BY



THANK YOU.



OUR NEIGHBOURHOOD



Our Neighbourhood Boundaries

The RPNA represents all residents living in Regent Park, a neighbourhood in Toronto's downtown east. The RPNA defines the boundaries of Regent Park as follows:

- North: Gerrard Street East (south side)
- West: Parliament Street (east side)
- South: Shuter Street (north side)
- East: River Avenue (west side)

PLUS: area east of River between Gerrard E and Dundas E



VOLUNTEER WITH US STRONGER TOGETHER.

Contact the RPNA.INFO@gmail.com to find out how to volunteer.



GTA

RamadanMealsTO delivers more than food to Regent Park community

By **Gilbert Ngabo** Crime Reporter
Mon., May 10, 2021 | 3 min. read

When Walied Khogali Ali and Kumsa Baker





RESOURCES



WEBSITE & SOCIAL MEDIA

Websites:

Regent Park Coalition - <https://www.regentparkcoalition.ca/>

RPNA - <https://www.rpna.info/>

Regent Park Social - <https://www.regentparksocial.org/>

RP Social Developmental Plan

Documents - SDP Terms of Reference - Copy available.

HOW TO GET INVOLVED?

Advocacy for community benefits for Phases 4 & 5 - through the RPNA Community Benefits Coalition

- Volunteer with your Neighbourhood Association - Regent Park Neighbourhood Association.
- Volunteer with Regent Park - Social Development Plan - Working Groups:

1. Community Building
2. Communications
3. Employment and Economic Development
4. Safety



- Regent Park Neighbourhood Association - RPNA

Contact Us:

F: <https://www.facebook.com/groups/RegentParkNA>

W: <https://www.rpna.info/>

<https://www.regentparkcoalition.ca/>

Email: rpna.info@gmail.com

Phone: 437-928-7154 or 416-625-7712

Join our team!





● ● ●
**COMMUNITY
BUILDING
WORKING GROUP**

WWW.REGENTPARKSOCIAL.ORG/SDP

**SOCIAL DEVELOPMENT PLAN
STAKEHOLDERS TABLE**

**COMMUNITY
SPACE
NEEDS**



fb.com/regentparkNA



[@rpnaregent](https://twitter.com/rpnaregent)



[rpnaregentparkna](https://www.instagram.com/rpnaregentparkna)

The purpose of RPNA is to build an inclusive and thriving community.

WWW.RPNA.INFO